

## A14 junction 47a Haughley – junction 49 Tothill road reconstruction Stakeholder newsletter

May 2023

Welcome to the latest edition of our newsletter for the A14 junction 47a to junction 49 concrete road reconstruction scheme.



We've made good progress across the scheme in the last month, breaking and removing the old concrete surface on the eastbound carriageway.

To date we've removed 9000 tons of concrete which is the same volume as 1.5 Olympic swimming pools.

In the coming weeks we'll begin removing the excess material from lane 2 to ensure the carriageway is level before we build the new foundations with a strengthened material. We'll begin laying the first layer of asphalt, before moving to lane 1 to begin rebuilding the road.

We apologise for the inconvenience caused while we do our work.



## A14 junction 47 entry slip road

Following feedback from local road users, we'll be altering the layout of the slip road at junction 47 on the A14.

We are making changes because traffic on the A14 is either slowing down and stopping to allow vehicles to merge, or not allowing vehicles to merge with the existing traffic which is causing congestion on the entry slip road.

To help solve this, we will be extending the eastbound entry slip road at junction 47 to allow traffic to merge into the A14 contraflow. Figure 1 shows traffic joining at junction 47, with figure 2 showing traffic either leaving at junction 47a using the left hand lane or entering the contraflow using the right hand lane.

We'll continue to monitor the traffic at this location.

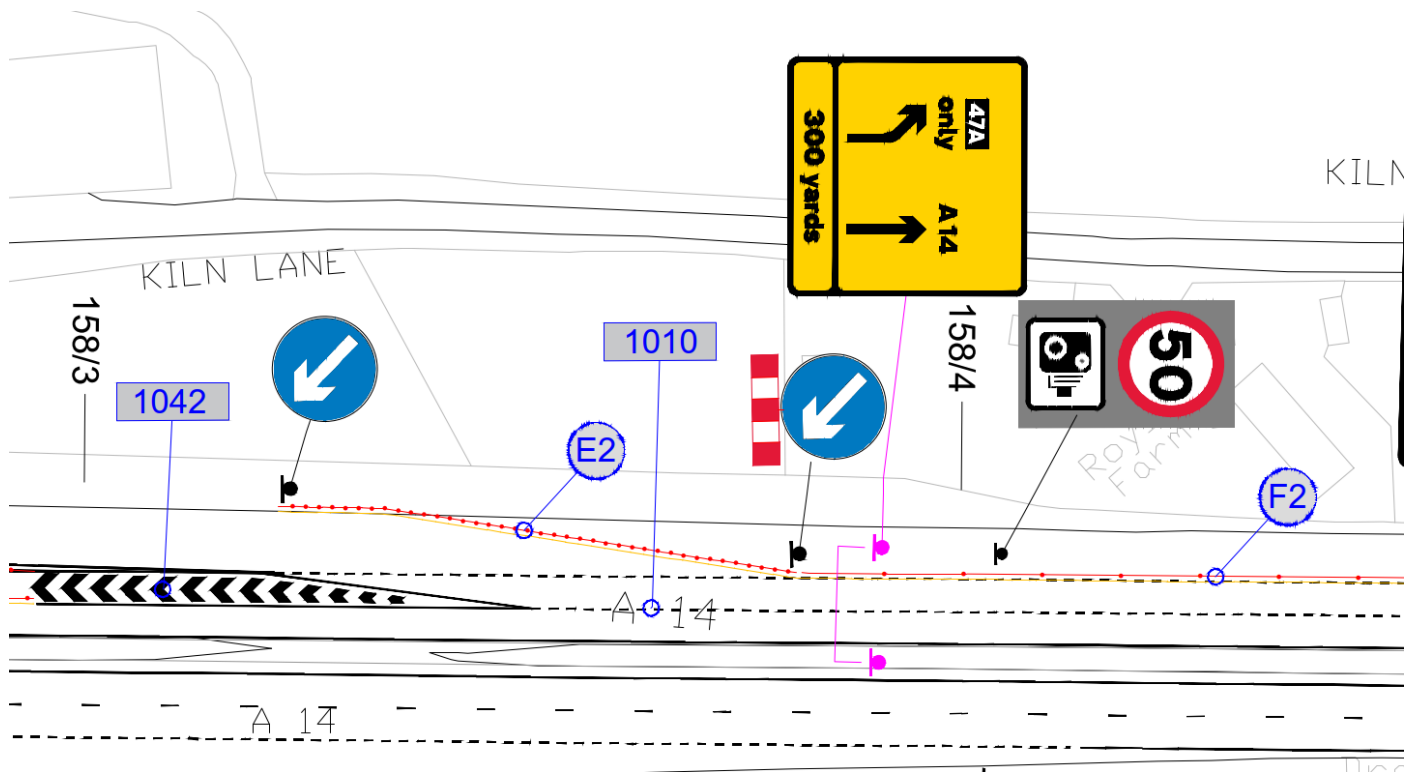


Figure 1

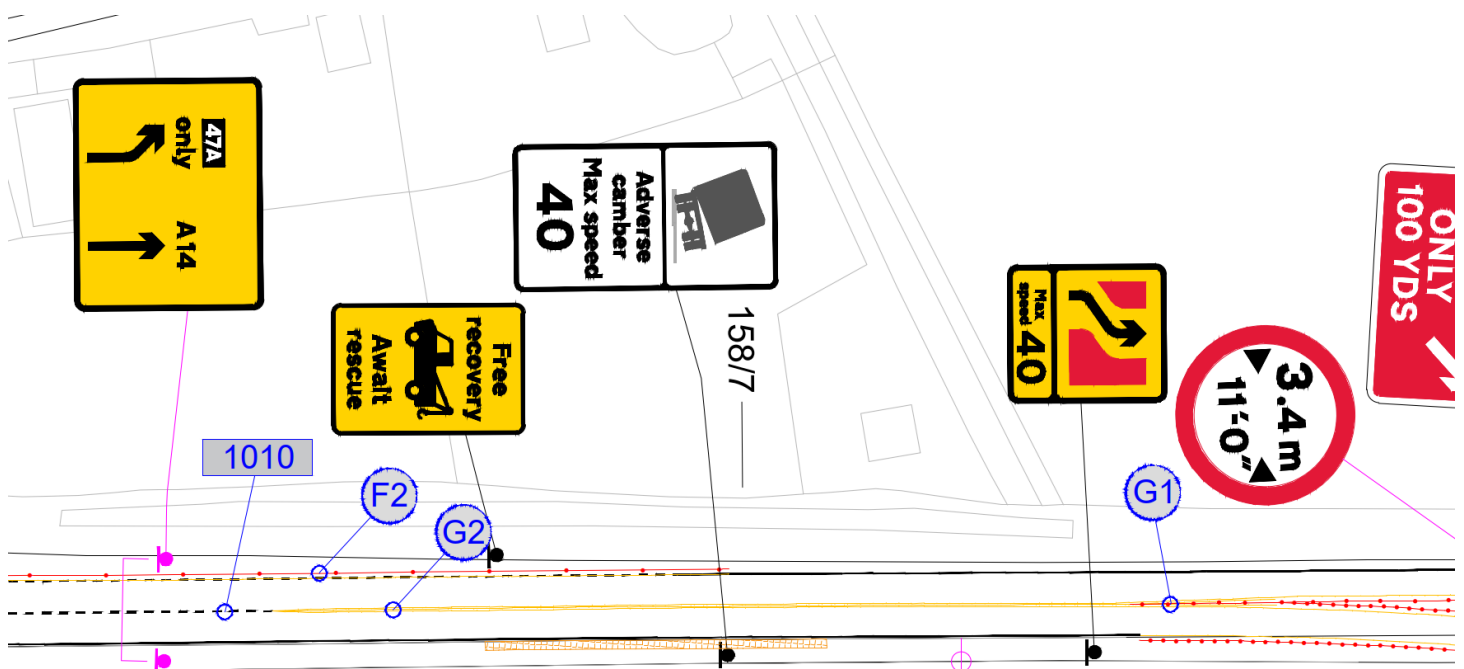


Figure 2

## Rat running

Please remember to stay on the A14 and avoid 'rat running' through villages.

The local roads have lower speed restrictions, they aren't meant for the high volumes of heavy goods vehicles and traffic, and often have weight restrictions in place.

The spring and summer are busy times for the farming industry, with more tractors and large agricultural vehicles using the local roads to access fields. So local roads shouldn't be used by traffic trying to find cut-throughs rather than using the A14.

We're continuing to review our signs to discourage drivers from using local roads rather than staying on the A14 through the roadworks, and we'll be adding extra signs to remind drivers.

We've written to the ports, local businesses and trade associations between Bury St Edmunds and Copdock asking that their drivers stay on the A14.

We are working with Suffolk County Council to look at alternative traffic calming measures that can be used on local roads to encourage drivers to stay on the A14. We've put two safety speed camera vans along the routes people typically use to rat run. We will be sharing the data collected with Suffolk County Council and Suffolk Constabulary.



## Travelling in warmer weather

During summer, you may be thinking about using our road network to go on holiday, have a day out, or visit friends and family. You may be travelling on roads that you're unfamiliar with.

Whatever you're looking to do, we want you to do it safely. So here are some hints and tips.

### Before you travel:

- Make sure your vehicle is fit for the journey – carry out our [recommended vehicle checks](#)
- Check the [weather forecast](#) for your route and destination
- If hot weather is forecast, take plenty of drinking water with you – enough for you and your passengers
- Allow plenty of time for your journey, including regular breaks
- Check [travel conditions](#) before setting out and, where it's safe to do so, during the journey

During periods of extreme hot weather, adjust your travel to avoid the hottest days and times of day if you can.

### Pack a summer kit

Carry essential summer supplies just in case you need them, especially if there's a forecast for severe weather. Essentials include:

- drinking water
- snacks that won't be affected by the heat
- a fully charged mobile phone and a charger
- a hat, sunglasses and sun block
- any emergency medication you may need

## Top tips for summer driving

### Think about other road users

Summer is popular time for cyclists, motorcyclists, walkers and horse riders to get out and about, so please take particular care to give them space and time. Slow down on sharp bends in case there's a vulnerable road user round the corner.

## Keep an eye on the temperature



During very hot weather, make sure your engine stays within the normal operating temperature range. If it begins to overheat, find somewhere safe to stop and allow your engine to cool down.

## Customer Survey

Please take a few moments to complete our [customer survey](#) on the A14 junction 47a Haughley to junction 49 Tothill scheme.

Your feedback will help us better understand how and what you want us to communicate with you.

## Keep in touch

We hope you're aware of our SMS (Short Messaging Service) which issues text messages when there is an incident that will affect your journey on this stretch of the A14 during morning or evening peak-time travel.

So, if there is a break down, or if a collision occurs in the traffic management, then we'll quickly send a SMS message to you, so you can make an informed decision about your journey

To sign up for this service by sending your mobile number to:  
[ConcreteRoadsEastA14@nationalhighways.co.uk](mailto:ConcreteRoadsEastA14@nationalhighways.co.uk).

## Keep in touch.

Visit our webpage and sign up for updates about the scheme at  
[www.nationalhighways.co.uk/A14Haughley](http://www.nationalhighways.co.uk/A14Haughley)

For more information about this work, please call our 24/7 Customer Contact Centre on 0300 123 5000, or email [info@nationalhighways.co.uk](mailto:info@nationalhighways.co.uk)