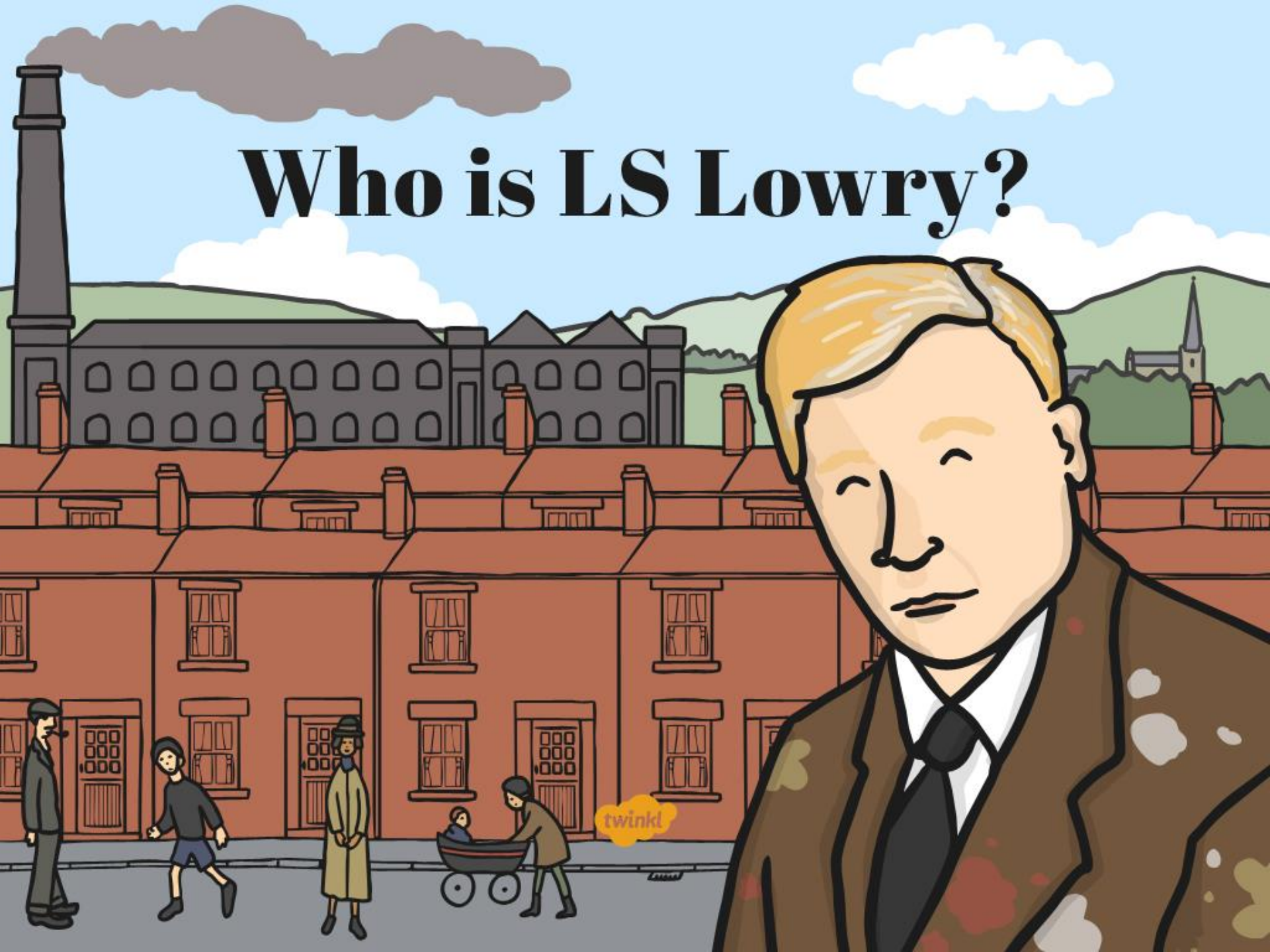




Art and Design

LS Lowry

Who is LS Lowry?



Aim

- I can compare two paintings.

Success Criteria

- I can say something that is the same about two paintings.
- I can say something that is different about two paintings.

LS Lowry

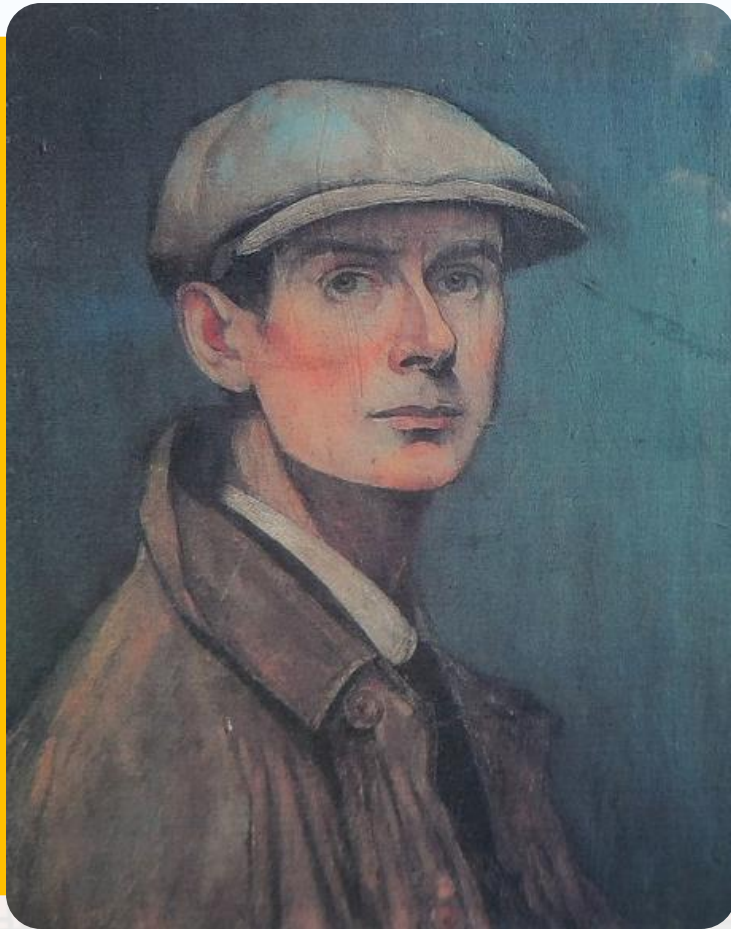


Photo courtesy of Karen V Bryan and oknovokght (@flickr.com) - granted under creative commons licence - attribution

Who is LS Lowry?



LS Lowry is one of Britain's most famous artists from the 20th Century.

LS Lowry is well known for painting industrial scenes and matchstick characters.

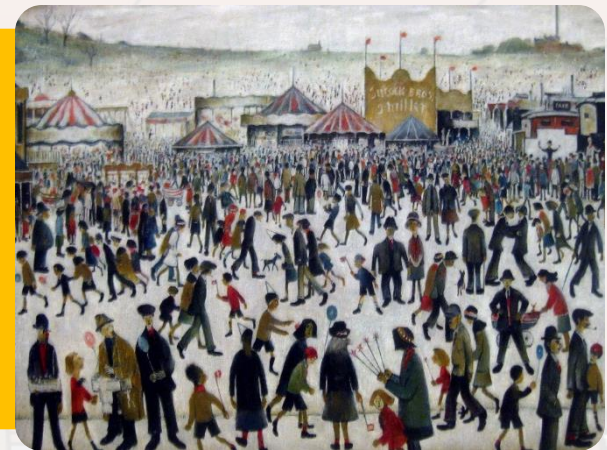


Photo courtesy Rich_Lem and Diego Sideburns (@flickr.com) - granted under creative commons licence - attribution

Who is LS Lowry?



Lawrence Stephen Lowry was born in Stretford, Lancashire, in 1887. His family were quite well off but not very happy. Lowry was a lonely child.

When Lowry was twenty-one his family had money worries and they moved to Pendlebury where there were lots of factories and cotton mills.

Lowry couldn't get a place in art school. Instead, he got a job as a clerk and took private art lessons, practising in his spare time.

Photo courtesy Black Stripe - front cover. Via Wikipedia

Who is LS Lowry?



Later, he worked collecting rents from houses all around Salford and Manchester in the North West of England. Even though he became quite a famous painter, he did this job for 42 years until he retired.

He liked to paint and draw things that he saw around the city as he did his job each day.

Who is LS Lowry?



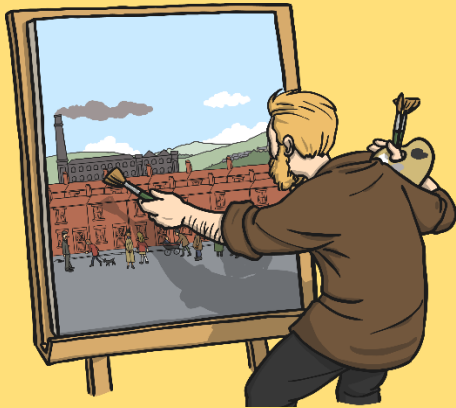
This is the North West of England, where Lowry lived and worked.

The Works of LS Lowry



A piece of art made by an **artist** is sometimes called a **work**.

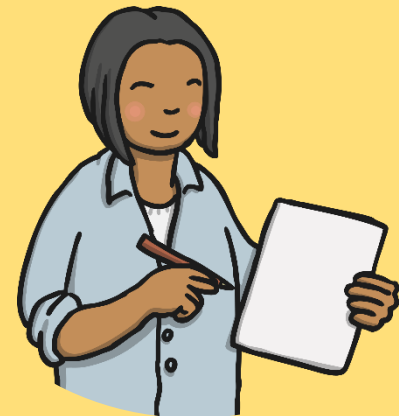
What kinds of art work do you make?



How many ways can you think of to make a work of art?



What can you use to make art?



The Works of LS Lowry

LS Lowry made many works of art. Lots of his works were drawings.
He drew many pictures in **pencil**, **charcoal** and **pen**.



Photo copyright to the estate of LS Lowry / DACS2015 - photo credit to tate.org.uk

The Works of LS Lowry

Lowry's most famous works are his **paintings**. His paintings can be seen in lots of **art galleries** around the world. A gallery is a building where you can go to see lots of works of art in one place.

LS Lowry even has a big gallery named after him in the **North West of England** near to where he lived.



Photo courtesy of Bernit Rostad (@flickr.com) - granted under creative commons licence – attribution

The Works of LS Lowry



Industrial Landscape, 1955
by LS Lowry

Lowry painted lots of **industrial landscapes**, as this was what he saw around him as he went about his daily life.

An **industrial landscape** painting is a painting of a place with lots of factories where people work to make things.

The Works of LS Lowry



Lancashire Fair, Good Friday, Daisy Nook, 1946
by LS Lowry

Lowry liked to paint buildings and factories but he also painted lots of pictures showing the lives of the people who lived in the local area.

Inside the Painting



We are going to imagine that we are inside these paintings by LS Lowry.



Photo courtesy Diego Sideburns (@flickr.com) - granted under creative commons licence - attribution and photo copyright to the estate of LS Lowry - photo credit to tate.org.uk

Inside the Painting



In your groups look closely at your paintings. Imagine you are inside the painting.

What kind of colours can you see? What is the weather like? Look at the people in the painting. What are they doing?



What would you be doing?
Where would you be going?
Where have you been?



What noises would you hear if you were in the painting?



What do you like about the painting? What don't you like about the painting?



If you were in the painting how would you feel?



Write or draw your thoughts and feelings on the activity sheet.



What Did We Discover?



How did it feel to be inside the painting?
What's the same about these paintings? What's different?
What parts of the paintings do you like? Why?



Photo courtesy Diego Sideburns (@flickr.com) - granted under creative commons licence - attribution and photo copyright to the estate of LS Lowry - photo credit to tate.org.uk

Aim



- I can compare two paintings.

Success Criteria

- I can say something that is the same about two paintings.
- I can say something that is different about two paintings.

