

---

# Admissions Guide

January 2020

---



# Joining Ipswich High School

Thank you for your interest in Ipswich High School.

We have established an admissions process which is straightforward, easy to navigate and insightful for both families and prospective pupils.

We welcome applications from girls and boys from age 3 to 18.

You will find details of how to apply across the following pages. If you have any questions, then please do contact us.

We would be delighted to welcome you to the school for a private tour or to one of our termly open events where you will discover more about what makes us so special.

I look forward to meeting you soon,



Ms Rebecca Geoghegan  
**Registrar**



# All Pupils

## Admissions

This Admissions Guide is for the 2021 - 2022 academic year. However, we would be delighted to talk to you about the possibility of joining our school during the current academic year.

Where we have spaces, we are very happy to admit pupils into the school at any time. For more information please talk to our Registrar.

## Fees

School fees for Lower and Middle Pre-Prep are charged per session or per whole day.

All other year groups are charged for the term. Families can decide to pay fees termly, monthly or annually. There is no difference in the fees however you choose to pay them.

Our school fees can be found here: [ipswichhighschool.co.uk/fees](https://ipswichhighschool.co.uk/fees)

## Scholarships

We offer **Year 7 and Year 12 Scholarships**. These are offered to those who excel in academia, sports, drama, art and music. Scholarships are offered to the top performing candidates who demonstrate outstanding ability.

Our scholarships are prestigious and are highly valued by University Admission tutors. The accolade, kudos and sense of achievement is considerable for both the pupil and our school.

All awarded scholarships are carried forward each year until the end of Year 13. It is possible to be awarded a scholarship in Year 7 and an additional scholarship later, on entry into Year 12.

## Sibling Discounts

Sibling discounts are awarded when two or more siblings from the same family are at the school at the same time, to show the value we place on continuity for families.

The tuition fee concession given is 10% to the second child and 15% to the third and 20% for the fourth and subsequent children.

## Entry Bursaries

If you would like to know more about our mean-tested bursary scheme, please contact the Registrar.

## School Meals

School meals are included in the school fees.

**Pre-Prep pupils** attending whole day sessions are provided with a school lunch. The menu is sent home weekly in order that you and your child can select lunches together. Healthy snacks and milk or juice are also included in the price of a session.

**All Prep School pupils and Senior School pupils (compulsory up to and including Year 11)** are provided with a high quality school lunch - a hot meal, cooked on site from fresh, seasonal and, wherever possible, local ingredients. We have a different menu each day with a choice of two or three main courses, and the children are able to eat at least two of their daily five portions of fruit and vegetables.

**Sixth formers** can choose to bring a packed lunch from home.

## Coach Routes

The vast majority of our pupils travel to school on one of our 13 coach routes, which cover much of Suffolk and Essex. Children over the age of five are able to use the coach service. Coach information can be found on our website: [ipswichhighschool.co.uk/coach-routes](http://ipswichhighschool.co.uk/coach-routes)



# The Diamond Model Approach

## **Single sex teaching in a unique, coeducational environment**

Ipswich High School's Diamond Model approach to education is unique in Suffolk but is increasingly favoured by leading schools across the country. It is an approach which not only gets the very best from pupils, but also from teaching staff, as they are able to tailor their professional techniques for girls and boys.

## **What is the Diamond Model?**

The term Diamond Model refers to the shape of the educational journey; with boys and girls being taught together in the lower years of the Prep School, separately for some subjects from age 10 – 16 and together again in the Sixth Form.

## **Why do we follow the Diamond Model?**

Ipswich High School has incredible expertise and experience in single sex teaching and with this approach we are able to educate a greater number of pupils via a methodology we truly believe in:

The Diamond Model recognises that, as girls and boys reach their teenage years, they approach their learning in different ways. Boys, for example, may be more spatially aware, and girls may have well-developed verbal skills. It is right, therefore, that as a modern educational institution, keen to deliver the best possible methods of teaching for our pupils, we should take this into account and shape our approach with this in mind.

In addition, evidence shows that boys and girls can face traditional gender stereotypes in some subject areas. For example, boys often dominate science classrooms leading to less participation from girls, whereas boys have traditionally underperformed in English lessons.

By teaching boys and girls separately in core subjects at these critical times in their educational journey, our teaching staff can tailor the pedagogy to best suit the needs of each group, getting the most out of every individual.

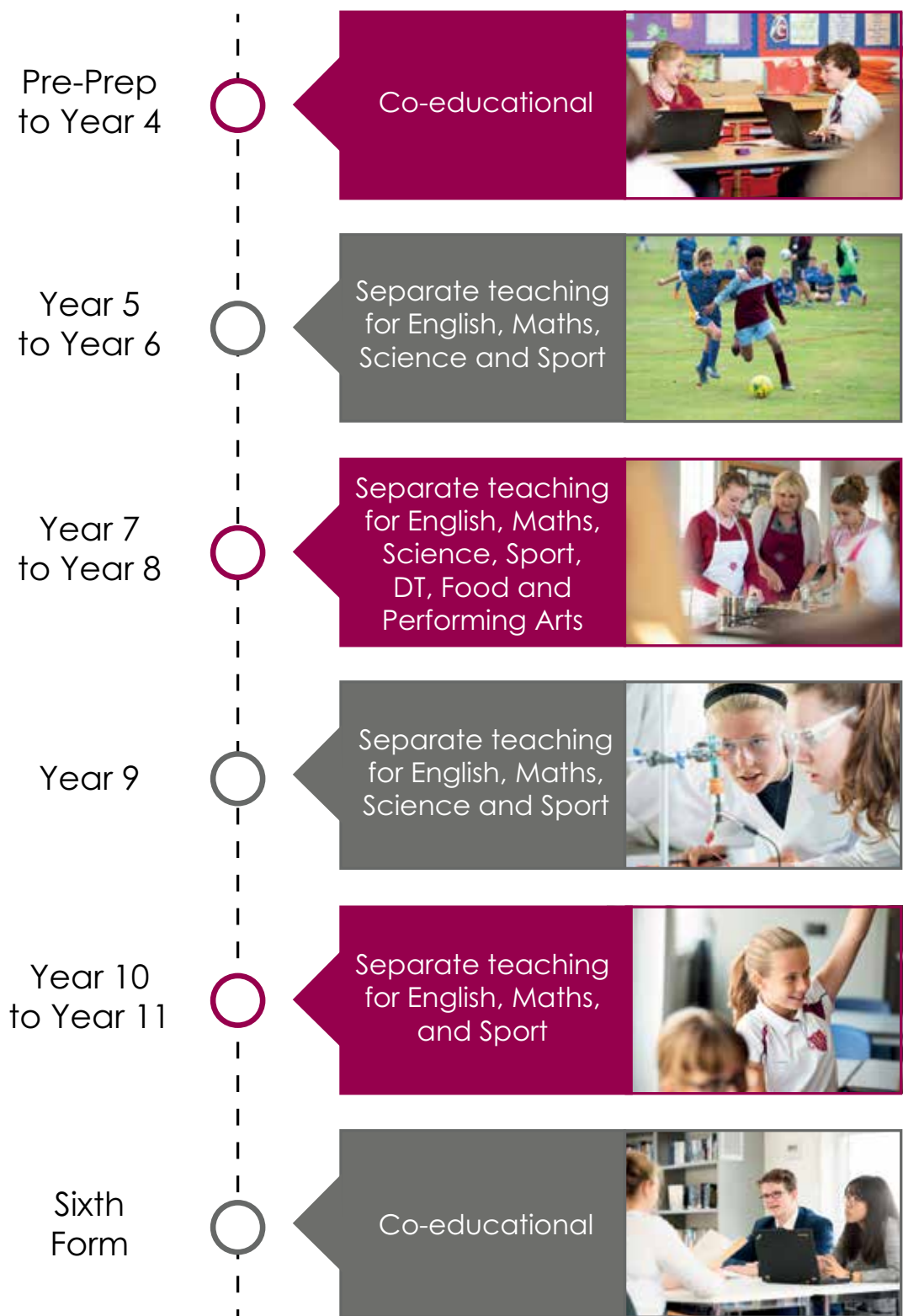
Alongside the ability to tailor teaching, the Diamond Model also allows pastoral care to be focused on the gender-specific needs of the pupils. This system encourages pupils to develop positive and respectful relationships with others.

## **How can this approach benefit my child?**

At Ipswich High School we aim to recognise and value the individuality of each child, providing opportunities for them to develop their potential within a happy, supportive community. The Diamond Model allows us to teach every individual in a way that is tailored to their needs, whilst providing incredible pastoral support in a coeducational environment. The school has a unique, warm character with outstanding academic results – a perfect ethos for happiness and success.



# Our Diamond Model Approach



\*information correct at time of print

# School Curriculum

The diagram below shows the subjects on offer across the school. In the Prep School and Lower Senior School pupils study a broad range of subjects so that they have experience of learning across different courses.

In Year 9 pupils start to consider their GCSE choices and experience the first year of GCSE teaching, although final choices are not made until Year 10. In the Sixth Form pupils choose three A Levels in subjects they really enjoy, alongside an independent research project if they wish for additional extension, called the EPQ (Extended Project Qualification).

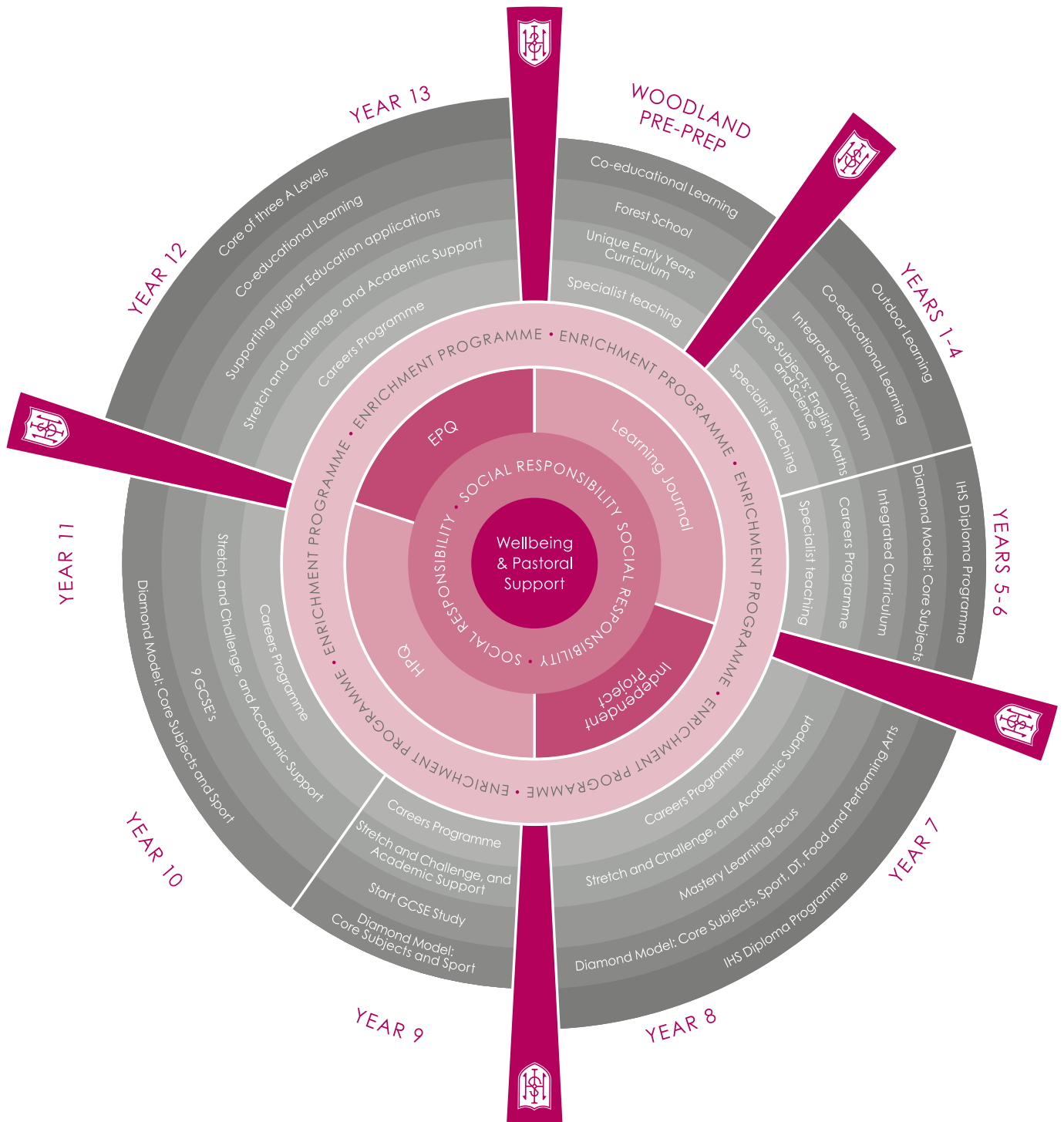
		Pre-Prep			Prep				Senior School					Sixth Form	
		EYFS	Year 1	Year 2	Year 3	Year 4	Year 5	Year 6	Year 7	Year 8	Year 9	Year 10	Year 11	Year 12	Year 13
Core	English Language														
	English Literature														
	Maths														
	Further Mathematics														
STEM	Biology														
	Chemistry														
	Physics														
	Astronomy														
	Psychology														
Modern Foreign Languages	Chinese (Mandarin)														
	French														
	Spanish														
Ancient Studies	Greek														
	Latin														
	Classical Civilisation														
Humanities	Economics														
	History														
	Geography														
	Geology														
	Religious Studies														
	Business Studies														
Creative Arts	Art														
	Design Technology														
	Food Studies														
	Photography														
Performing Arts	Music, Dance and Drama														
Individual Projects	Higher Project Qualification														
	Extended Project Qualification														
Fitness	Sport														
	PE														
	Swimming														
Wellbeing	Life Skills (PSHE)														
	Forest School														

Compulsory

Optional

# Enhanced Curriculum

The curriculum at Ipswich High School is extensive and includes elements completed beyond lessons. This diagram illustrates the full comprehensive curriculum on offer for each pupil across the school, with social responsibility, along with wellbeing and pastoral care being at the core of our curriculum.





# Pre-Prep Admissions

## (Nursery and Reception)

### Attendance

We welcome children in the term in which they turn three and operate a three-term school year. There are three year groups in the Pre-Prep:

**Lower Pre-Prep (ages 3+):** Pupils attend for a minimum of three mornings a week.

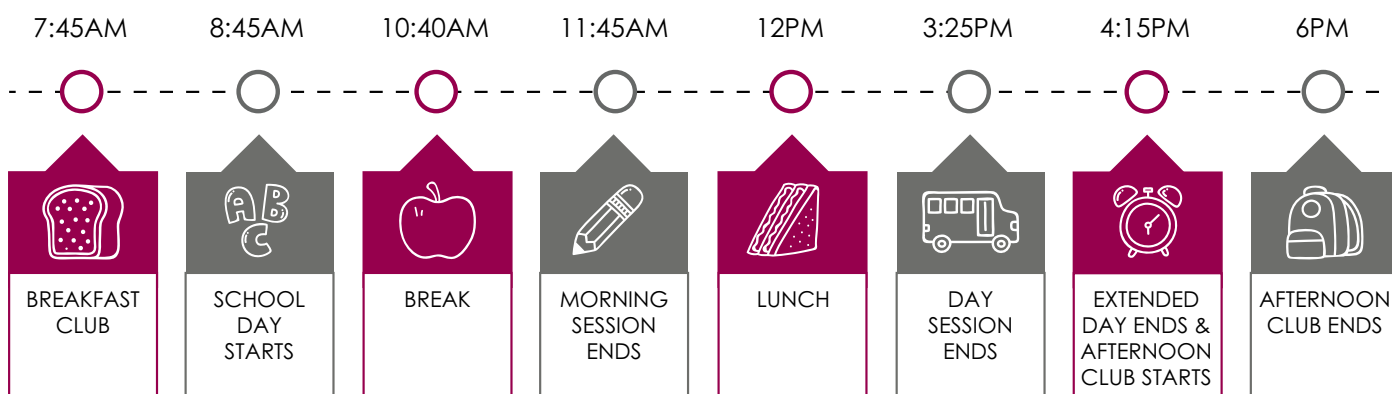
**Middle Pre-Prep: (ages 4+):** Pupils attend for a minimum of five mornings a week.

**Upper Pre-Prep:** Pupils must attend five full days of compulsory education (this is Reception class).

At the end of Pre-Prep, your child will automatically progress to Year 1 and carry on through the Prep School.

### School Hours

Pre-Prep start their day at 8:45am and the morning session ends at 11:45am. Full day sessions end at 3:25pm and children can stay in our after-school club that runs until 6pm for an additional fee.



### Early Years' Funded Care

We currently offer 15 hours of Early Years' Funded Care, in line with the government's offer if you meet the criteria. For up to date information see:

[www.gov.uk/help-with-childcare-costs/free-childcare-and-education-for-2-to-4-year-olds](http://www.gov.uk/help-with-childcare-costs/free-childcare-and-education-for-2-to-4-year-olds)

## Wraparound Care

We have a Breakfast Club from 7:45 to 8:30am offering cereal, fresh croissants and fruit juices. The session is free, however food is chargeable. Our Afternoon Club runs from 4:15pm to 6pm each day and children can enjoy a light tea from our varied menu. The Afternoon Club can be booked via the Prep School receptionist (on a first come, first served basis) for a fee and will be invoiced each term.

## Admissions to Pre-Prep

Applications are accepted for all three year groups in Pre-Prep and children can join us at any point during the school year (depending on availability).

**Entry into the Lower and Middle Pre-Prep (Nursery):** There is no formal assessment procedure for our Pre-Prep, but all pupils join us for a taster morning before we offer a place. This enables children to get to know us better, enjoy the activities and start to become familiar with the setting.

**Entry into the Upper Pre-Prep (Reception):** Children typically join Reception by coming to a January Taster Session, however these can be arranged at any point in the academic year.

## January

- Reception children are assessed informally during Taster Sessions
- Offers are made

## First Monday in March

- Deadline for place acceptance

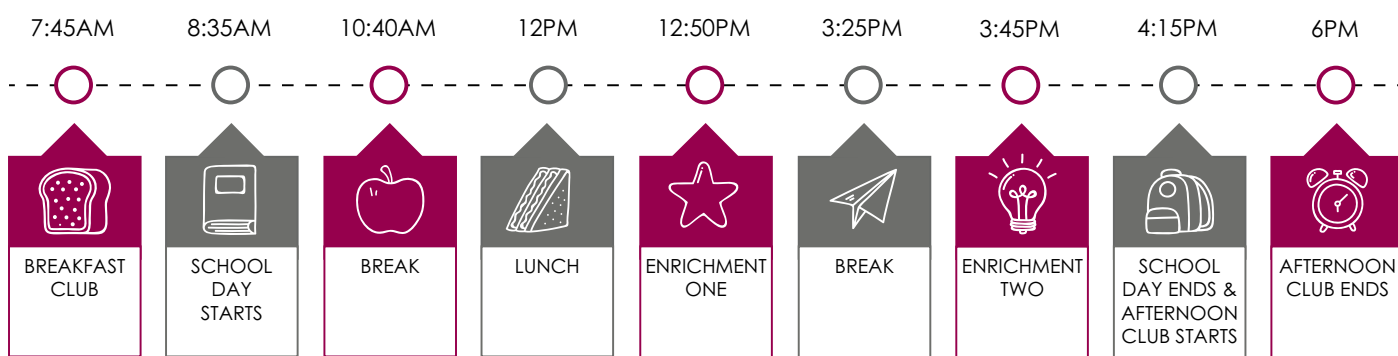


# Prep School Admissions

## (Year 1 to Year 6)

### School Hours

Prep School children start their day at 8:35am for registration and the day ends at 4:15pm. School closes at 3:30pm every Friday.



### Wraparound Care

We have a Breakfast Club from 7:45 to 8:30am offering cereal, fresh croissants and fruit juices. The session is free however food is chargeable. Our Afternoon Club runs from 4:15pm to 6pm each day. Children can enjoy a light tea from our varied menu. The Afternoon Club can be booked via the Prep School receptionist (on a first come, first served basis) for a fee and will be invoiced each term.

### Admissions

After completing the Registration Form, all children wishing to join the Prep School are invited to attend a Prep School Taster Day. The Taster Day provides an opportunity for your child to spend the day with us, experience the school and meet their potential classmates. It also allows us to make age-appropriate entrance assessments. In Year 1 and 2 the assessments are informal observations during the visit – usually including a range of activities such as discussion, phonics, reading, writing, counting and sorting.

Assessments for those wishing to join Year 3 to 6 are more structured, with written papers in English and Mathematics based on the Primary Curriculum. Pupils joining Years 5 and 6 also sit a Verbal Reasoning paper. The tests are conducted in an informal manner and are not designed to intimidate, rather to enable us to make a fair and accurate observation of your child's ability and any specific learning requirements. We will request a report from your child's current school on receipt of your Registration Form.

## **Year 1 - Year 4 Admissions**

- Open Day/Private tour
- January: Children are assessed during Taster Days
- January: Offers are made
- First Monday in March: Deadline for acceptance of place
- Start dates in September, January or April

## **Year 5 and Year 6 Admissions**

- All children who are enrolled with us during Year 5 are automatically offered a place in our Senior School Year 7.
- January: Children are assessed during Taster Days through age-appropriate testing
- January: Offers are made
- First Monday in March: Deadline for acceptance of place
- Start dates in September, January or April

## **Typical Entry Points**

We can accept Prep School children into all year groups depending on availability. Please contact the Registrar for further information.



# Senior School Admissions

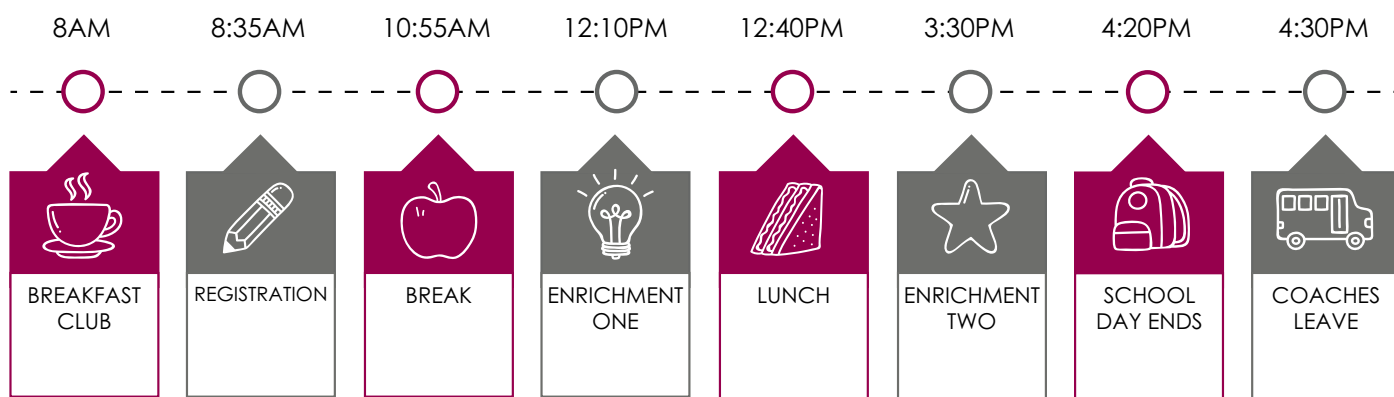
(Year 7 to Year 11)

We welcome applications for all stages in the Senior School, depending on availability of places. Children joining the Senior School will sit formal examinations and assessments and we will also request a reference from your child's current school on receipt of your Registration Form.

Children entering the Senior School into Year 7 and 12 are welcome to make an application for a scholarship and details are highlighted on the following pages.

## School Hours

Registration is at 8:35am and the day finishes at 4:20pm in time for the coaches which leave at 4:30pm. Senior pupils are welcome to join us for breakfast from 8am (food is chargeable) and can stay after school from Monday to Thursday, from the end of the school day until 5:30pm, and Friday from the end of the school day until 5pm. School ends at 3:30pm every Friday.



## Year 7 Admissions for September 2021

### October 2020

- 9th October: Deadline for submitting Year 7 Gainsborough Scholarship applications
- 30th October: Deadline for submitting Registration Form

### November 2020

- 5th - 6th November: Scholarship interviews and assessments for short-listed applicants
- 11th November: Entrance Examination and assessments. The Entrance Examination for Year 7 entry consists of two formal papers: English (comprehension and creative writing) and Mathematics. Additionally, your child will take part in a group activity with the Head of Year 7 and Assistant Head (Pastoral)

### December 2020

- Offers of Admission made
- Scholarship recipients informed



## March 2021

- First Monday in March: Deadline for acceptance of place

## Year 7 Scholarships

We offer scholarships for Year 7 entrants, which are available for application for both internal and external pupils. For entry to Year 7 we offer the [Gainborough Scholarship](#) to top-performing children in Sports, Art, Drama and Music. Application forms can be found later in this guide.

We also offer our [Christchurch Academic Scholarship](#) which are awarded to the top-performing children based on performance in the Entrance Examination. These are awarded by the Head and you do not apply.

## Typical Entry Points

Although this is the typical schedule for Year 7 entry, depending on availability we may be able to accept applications and make assessments at other times. If you are interested in applying for Year 7 entry but have missed the above deadlines, please contact the Registrar to discuss availability.





# Gainsborough Scholarship, Year 7 2021 Entry

Our Gainsborough Scholarships are awarded to Year 7 entrants who excel in Art, Drama, Music or Sport. Find below further information for each individual scholarship.

## Art

On the day of the assessment, students should bring a portfolio of recent work and we encourage candidates to include work completed in their own time alongside school art work. Portfolios should be no larger than your child is able to carry. The Art assessment will involve a drawing activity and you will be interviewed by the Head of Art and asked to share your portfolio and discuss your interest in Art. We will provide all art materials.

## Drama

On the day, the Drama assessment comprises three activities, including group work, the opportunity to perform a prepared piece of the applicant's choosing (three minutes maximum) and an interview with the Director of Drama, giving candidates the opportunity to share their interests and experience. A professional actor/director will sit on the panel.

## Music

Candidates should have strong potential in at least one instrument and/or singing. You will be asked to play a prepared piece of your choice for each instrument (maximum of three, including voice). The audition will include an interview with our Director of Music, exploring the candidate's musical interests. We will be looking for candidates to demonstrate their musicality, flair and technical skill.

## Sport

We are looking for talented, high performing, all-round athletes who demonstrate a high standard of performance in sport and a passion for and commitment to school sport, the ability to always perform to their full potential in lessons, practices and match fixtures and a positive attitude to all aspects of the PE curriculum, leadership skills and empathy towards others in sporting situations. The assessment will involve an interview with staff from the Sports Department and a series of generic practical assessment tests. (Pupils may be filmed during the practical assessment.)

## Scholarships and Awards

Ipswich High School Scholarships and Awards reward excellence based on performance at assessment. These constitute a modest discount on the full fee, either for a set period of time, or for the duration of a pupil's time at the school. In some cases the Award may be 'Honorary', whereby the recipient gains the accolade of being a scholar, but no monetary discount is given.

## Honorary Scholarships

Our Scholarships are awarded in order of merit and Honorary Scholarships are awarded to pupils who narrowly miss out in obtaining the top awards. Honorary Scholarships give no financial benefit, but recognise a pupil's potential and commitment to a subject area. They will be given the same recognition as all other Scholars and their name will be scribed onto our scholarship plaques within school. In addition, teachers are aware that our Honorary Scholars are able pupils, meaning there will be stretch and challenge during lessons, and they may be set extension work, particularly in their specific area of interest. Scholar status is held in high esteem by universities and allows access to further academic opportunities.

## Removal of an Award

The Head has the discretion to reduce or withdraw an Award, not only where a pupil's progress, attitude or behaviour has been unsatisfactory, but also where the parents/guardians have failed to support the school, for example the late payment of any contribution they are making to the fees.

# Sixth Form Admissions

## *(Year 12 to Year 13)*

All Year 11 Ipswich High School students are automatically offered a place in Sixth Form. No further registration information is needed unless they would like to apply for the Orwell Scholarship.

Pupils coming from other schools must complete the Registration Form and appropriate applications.

## **For entry in September 2021**

### **September 2020**

- 30th September: Sixth Form Open Evening
- Students meet with the Director of Sixth Form to discuss A Level options on a one-to-one basis
- Preliminary A Level choices submitted

### **October 2020**

- 30th October: Orwell Scholarship application deadline

### **November 2020**

- 10th November: Orwell Scholarship assessment day and interview

### **December 2020**

- 1st December: Sixth Form entry offers awarded
- 17th December: Deadline for acceptance of awards

### **January 2021**

- 31st January: Application deadline for the Elliston Award

### **February 2021**

- A Level subject choices confirmed

### **March 2021**

- First Monday in March: Deadline for acceptance of place (external candidates)

## **Sixth Form Scholarships and Awards**

Ipswich High School Scholarships and Awards reward excellence based on performance at assessment. These constitute a discount on the full tuition fee, either for a set period of time, or for the duration of a pupil's time at the school. In some cases the Award may be 'Honorary', whereby the recipient gains the accolade of being a scholar, but no monetary discount is given.

### **Honorary Scholarships**

Our Scholarships are awarded in order of merit and Honorary Scholarships are awarded to pupils who narrowly miss out in obtaining the top awards. Honorary Scholarships give no financial benefit, but recognise a pupil's potential and commitment to a subject area. They will be given the same recognition as all other Scholars and their name will be scribed onto our scholarship plaques within school. In addition, teachers are aware that our Honorary Scholars are able pupils, meaning there will be stretch and challenge during lessons, and they may be set extension work, particularly in their specific area of interest. Scholar status is held in high esteem by universities and allows access to further academic opportunities.

### **The Orwell Scholarships**

Orwell Scholarships are awarded to both external and internal Sixth Form candidates on the basis of ability, potential and qualities necessary to make a significant and ongoing contribution to the quality of school life.

These are all-rounder scholarships and we are looking for students with flair in any and all subjects. Applicants will have the ability both to lead and to be part of a team, have sound personal qualities including enthusiasm, consideration, motivation and integrity, show talent in extra-curricular activities and academic strength indicative of the potential to achieve good GCSE and A Level grades.

Applicants for the Orwell Scholarship are expected to write a one-page personal statement to outline their achievements to date and state why they feel they make an excellent candidate for the scholarship, complete a scholarship application form and sit a Verbal Reasoning test and have a meeting with the Director of Sixth Form or the Deputy Head.

### **The Elliston Awards for Sixth Form study**

We guarantee to offer at least one of our Elliston Awards to suitable applicants from each state-funded school in Essex or Suffolk. We will also consider applications from pupils currently receiving bursaries to attend other independent schools. The award is offered for both years of Sixth Form study for those who meet our criteria. All applicants for this award must:

- Be predicted/have achieved seven 6 to 9 grades in their GCSE subjects
- Have a letter of recommendation from their current school
- Provide a one-page personal statement to outline their achievements to date and state why they feel they make an excellent candidate for the award

All applicants will be interviewed by our Director of Sixth Form. Students applying for the Elliston Award may also apply for the Orwell Scholarship.

### **Removal of an Award**

The Head has the discretion to reduce or withdraw an Award, not only where a pupil's progress, attitude or behaviour has been unsatisfactory, but also where the parents/guardians have failed to support the school, for example the late payment of any contribution they are making towards the fees.

### **Typical Entry Points**

Although this is the typical schedule for Sixth Form entry, depending on availability we may be able to accept applications and make assessments at other times. If you are interested in applying for Sixth Form but have missed the above deadlines, please contact the Registrar to discuss availability.



---

# Admissions Forms

---



# Registration Form

Please complete this form and return it to the Registrar, either by post or electronically with a (non-returnable) registration fee of **£100**. Payment can be made by cheque payable to Ipswich High School or by BACS, **Account number: 71726543 Sort Code: 53-61-24**. Please use your child's surname as the BACS reference.

**Please note:** Registrations are considered in the order in which they are received.

## Details of pupil:

Proposed Start Date \_\_\_\_\_ Proposed Year Group \_\_\_\_\_

Surname \_\_\_\_\_

Forename(s) \_\_\_\_\_

Date of birth: Day \_\_\_\_\_ Month \_\_\_\_\_ Year \_\_\_\_\_

Nationality \_\_\_\_\_

Gender Girl  Boy

Day Pupil  or Boarding  If yes to Boarding, please indicated type of boarding required:

Full Boarding  Weekly Boarding  Flexi Boarding

Does your child require a visa to reside in the UK? Yes  No

**NB: The school requires sight of your child's passport and all relevant visas before admission.**

## Parental/Guardian details:

Parent/Guardian 1\*

Parent/Guardian 2\*

Name and title \_\_\_\_\_

Address \_\_\_\_\_

\_\_\_\_\_

\_\_\_\_\_

Postcode \_\_\_\_\_

Work telephone \_\_\_\_\_

Home telephone \_\_\_\_\_

Mobile \_\_\_\_\_

Email \_\_\_\_\_

Your nationality \_\_\_\_\_

Is this the child's home address? Yes  No

Yes  No

Is this person the fee payer? Yes  No

Yes  No

\*We are required by law to engage with a pupil's parents equally. You must provide details of both parents/guardians/partners.



# Registration Form

## Other people with parental responsibility:

(This may be a legal guardian or step parent where their consent will be required for admission.)

Name and title \_\_\_\_\_

Relationship to child \_\_\_\_\_

Address \_\_\_\_\_  
\_\_\_\_\_

Postcode \_\_\_\_\_

Home telephone \_\_\_\_\_

Mobile \_\_\_\_\_

Email \_\_\_\_\_

## If someone other than the parents/guardians are to pay the school fees for the applicant, please provide their details:

Name and title \_\_\_\_\_

Relationship to child \_\_\_\_\_

Address \_\_\_\_\_  
\_\_\_\_\_  
\_\_\_\_\_

Postcode \_\_\_\_\_

Home telephone \_\_\_\_\_

Mobile \_\_\_\_\_

Email \_\_\_\_\_

Please confirm that these are the details of the person paying the school fees: Yes





# Registration Form

Year 7	Are you enclosing an application form for a Gainsborough Scholarship in Music, Art, Drama or Sport?	Yes <input type="radio"/> No <input type="radio"/>
Sixth Form	Are you enclosing an application form for an Orwell Sixth Form Scholarship?	Yes <input type="radio"/> No <input type="radio"/>
	Are you enclosing an application form for an Elliston Award?	Yes <input type="radio"/> No <input type="radio"/>

## Current School:

Name \_\_\_\_\_

Address \_\_\_\_\_  
\_\_\_\_\_  
\_\_\_\_\_

Email \_\_\_\_\_

Telephone \_\_\_\_\_

Name of Head \_\_\_\_\_

Current year group \_\_\_\_\_

Date started \_\_\_\_\_

What language(s) are spoken at home?  
\_\_\_\_\_

Please provide details of any medical conditions or health problems affecting your child; any learning difficulty, disability or special educational needs, as well as any behavioural or social difficulties your child may have. We can then consider any adjustment that may be needed when your child enters the school. Please provide as much detail as possible (attaching relevant documentation and extra sheets as needed):

\_\_\_\_\_  
\_\_\_\_\_  
\_\_\_\_\_  
\_\_\_\_\_  
\_\_\_\_\_  
\_\_\_\_\_



# Registration Form

Please list names of any siblings who are/have been at Ipswich High School:

---

---

Families with two or more children in the school will receive a sibling discount of 10% for the first sibling, 15% for the second sibling and 20% for the third and subsequent siblings. Children must be enrolled at the school at the same time to be eligible.

Are you applying to any other schools? Yes  No

If YES, please list below:

---

---

How did you find out about Ipswich High School?

---

I have enclosed a cheque for £100  I have paid the registration fee via BACS

First signatory \_\_\_\_\_

Relationship to child \_\_\_\_\_

Date \_\_\_\_\_

Second signatory \_\_\_\_\_

Relationship to child \_\_\_\_\_

Date \_\_\_\_\_

*By completing and signing this form you give us permission to contact your child's current school to request their most recent school report.*

*If and when a place is offered and accepted you will be required to complete and sign our official agreement and pay a deposit, which will constitute the contract between yourselves and the school.*



# Year 7 Gainsborough Scholarship

Pupil name \_\_\_\_\_

Current school \_\_\_\_\_

Date of birth: Day \_\_\_\_\_ Month \_\_\_\_\_ Year \_\_\_\_\_

I wish to be considered for the following Scholarship(s):

Art

Drama

Music

Sport

All application criteria and application details can be found on page 15 and our website:  
[www.ipswichhighschool.co.uk/scholarships](http://www.ipswichhighschool.co.uk/scholarships)

*Please return to the Registrar by the deadline of Friday 9th October 2020.*

**Your application must include this form, a one page CV and two references for each of our scholarships you are applying for (except for Art, where only a one page CV is required).**



# The Orwell Sixth Form Scholarship

Pupil name \_\_\_\_\_

Current school \_\_\_\_\_

Date of birth: Day \_\_\_\_\_ Month \_\_\_\_\_ Year \_\_\_\_\_

I wish to be considered for the Orwell Sixth Form Scholarship:

*I attach my one-side, A4 personal statement which outlines my achievements to date and why I feel I would make an excellent candidate for the scholarship.*



All application criteria and application details can be found on our website:  
[www.ipswichhighschool.co.uk/scholarships](http://www.ipswichhighschool.co.uk/scholarships)

*Please return to the Registrar by Friday 30th October 2020.*



# The Elliston Sixth Form Scholarship

Pupil name \_\_\_\_\_

Current school \_\_\_\_\_

Date of birth: Day \_\_\_\_\_ Month \_\_\_\_\_ Year \_\_\_\_\_

I wish to be considered for the Elliston Sixth Form Award.

To apply for the Elliston Award, you should complete the online application form which you can find here: <https://www.ipswichhighschool.co.uk/year-12-scholarships/>

*Please submit your application by 31st January 2021.*





# Find out more

Please visit our website, like us on Facebook or follow us on Twitter or Instagram for more information about the school.

Web: [ipswichhighschool.co.uk](http://ipswichhighschool.co.uk)

Facebook: [@ipswichhighschool](https://www.facebook.com/ipswichhighschool)

Twitter: [@IpswichHigh](https://twitter.com/IpswichHigh)

Instagram: [ipswichhighschool](https://www.instagram.com/ipswichhighschool)

# Get in touch

For further information about Ipswich High School, queries regarding admissions, bursaries or scholarships and to arrange a private tour of the school, please contact our Registrar, Rebecca Geoghegan.

Tel: 01473 201058

Email: [admissions@ipswichhighschool.co.uk](mailto:admissions@ipswichhighschool.co.uk)





Woolverstone, Ipswich, Suffolk IP9 1AZ

Telephone 01473 780201 | Email [enquiries@ipswichhighschool.co.uk](mailto:enquiries@ipswichhighschool.co.uk) | Web [ipswichhighschool.co.uk](http://ipswichhighschool.co.uk)