

Diving into Mastery – Diving

Adult Guidance with Question Prompts

Children should be able to use the vocabulary of 'half past' and notice that the minute hand travels halfway around the clock and points to the number six. They begin to notice that the hour hand is halfway between the hours when it is half past.

Can you count around the clock face?

Which hand can you see on the clock?

Which hand is missing? Is this the long hand or the short hand?

Is the hour hand on the hour or halfway between the hours?

Can you show me half past _____?

Where does the minute hand point to at half past?

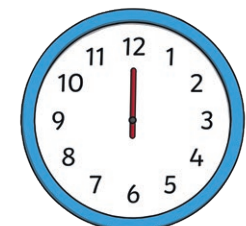
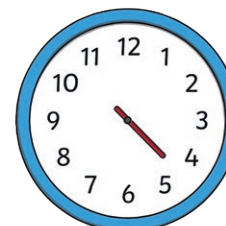
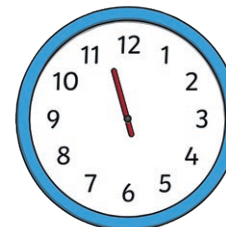
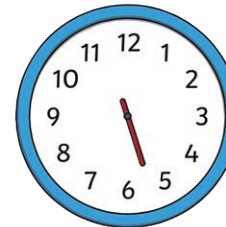
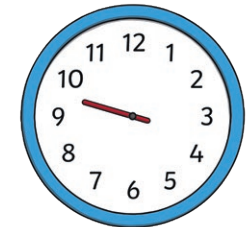
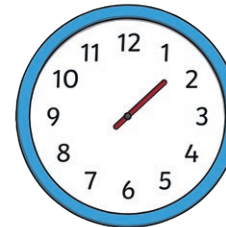
Where does the hour hand point at half past?

Can you use the word 'always' in your answer?

Clock Hands



The minute hand has fallen off these clocks! Look at the hour hand. Can you draw in the missing minute hand on each clock to show o'clock or half past?



Diving into Mastery – Deeper

Adult Guidance with Question Prompts

Children read time to the half hour and recognise a time to half past by noticing that the minute hand is pointing to the six. They draw the hands of the clock, ensuring the hour hand is the short hand and the minute hand is the long hand. They notice that the hour hand is halfway between the hours at half past times and can compare this to its position at o'clock times.

Which hand can you see on the clock?

Which hand is missing? Is this the long hand or the short hand?

Where does the minute hand point to at the hour?

Where does the minute hand point to at half past the hour?

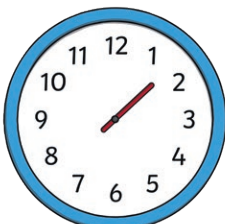
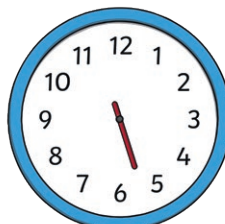

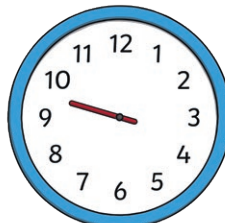
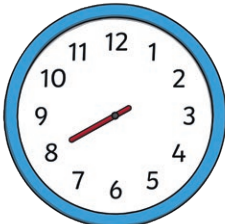
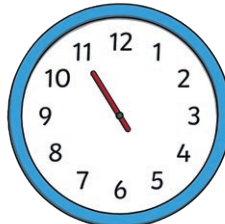
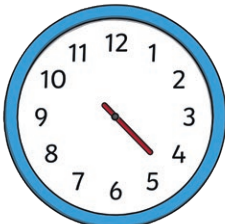
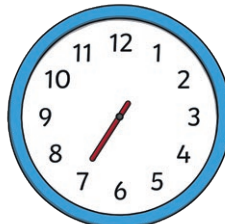
Which numbers will the hour hand point between at half past nine? Can you explain why this happens?

Which numbers will the hour hand point between at half past eleven?

Clock Hands



The minute hand has fallen off these clocks! Look at the hour hand. Can you draw in the missing minute hands and circle the time that each clock shows?

	half past 1 1 o'clock half past 2		half past 6 6 o'clock half past 5
	half past 5 5 o'clock half past 4		half past 9 9 o'clock 10 o'clock
	half past 8 8 o'clock 9 o'clock		half past 11 11 o'clock half past 10
	5 o'clock 4 o'clock half past 4		half past 7 7 o'clock 6 o'clock

Diving into Mastery – Deepest Adult Guidance with Question Prompts

Children read time to the half hour and recognise a time to half past by noticing that the minute hand is pointing to the six and the hour hand is pointing between the hours. They draw the hands of the clock, ensuring the hour hand is the short hand and the minute hand is the long hand. They notice that the hour hand is halfway between the hours at half past times and can compare this to its position at o'clock times.

How do you know which is the minute hand?

How do you know which is the hour hand?

Where will the minute hand be at half past _____?

Where will the hour hand be at half past _____?

Describe the position of the hour hand when you make an o'clock time.

Describe the position of the hour hand when you make a half past time. Explain what you notice.

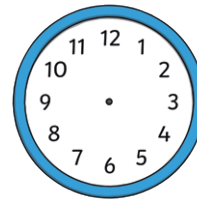
Make up your own instructions for drawing the hands of the clock.

Clock Hands

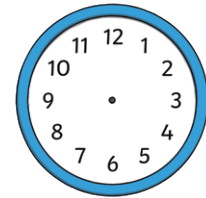


Read the instructions and draw the hands on the clock. Write the time underneath.

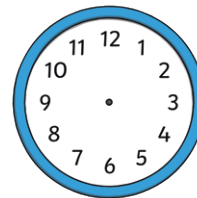
The minute hand is pointing to the 6.
The hour hand is pointing halfway between 7 and 8.



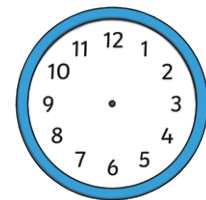
The minute hand is pointing at 12.
The hour hand is pointing to 5.



The minute hand is pointing at 12.
The hour hand is pointing to 10.



The minute hand is pointing at 6.
The hour hand is halfway between 11 and 12.



The minute hand is pointing to the 6. The hour hand is somewhere between the 1 and the 6.
What are all the possible times that the clock