



Maths

Measurement

Oodles of Time



twinkl

Aim

- To draw hands on a clock to show the time to 5 minutes.

Success Criteria

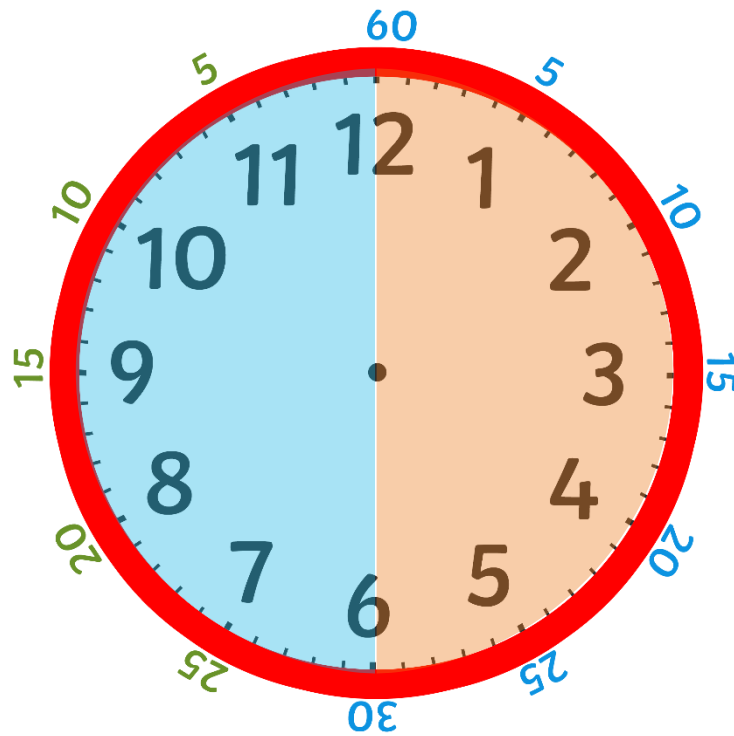
- I can count in 5 minute intervals around a clock face.
- I can count clockwise or anticlockwise on a clock to find 'to' and 'past' times.
- I can draw a long hand to represent the minutes a short hand to represent the hour.

To or Past?



Remember, when the minute hand passes 'half past', the time stops being 'minutes past' and becomes 'minutes to'.

minutes to

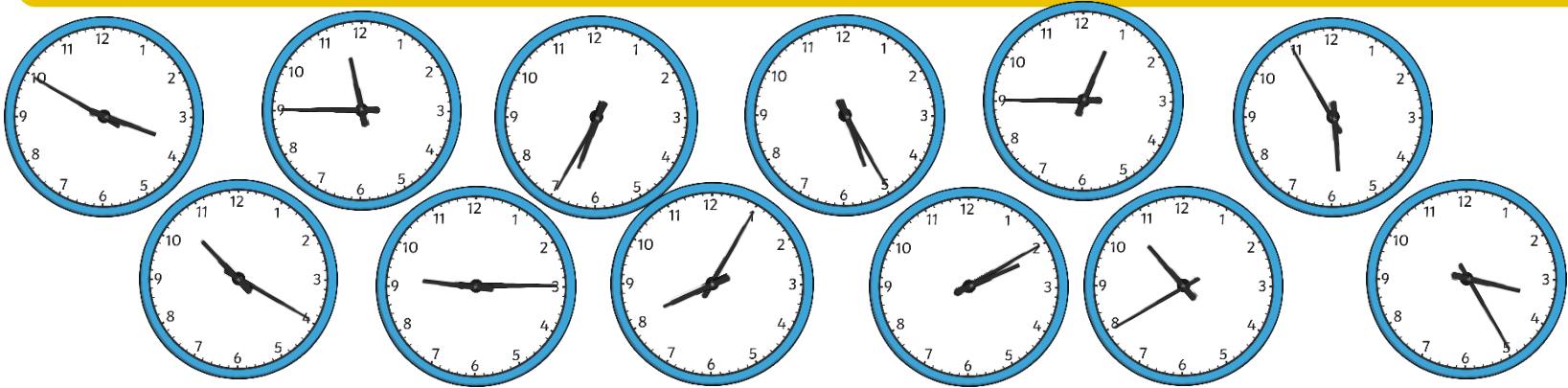


minutes past

To or Past?



Can you read and sort these times into 'minutes past' and 'minutes to' times?



Minutes **to** the hour

Minutes **past** the hour

Blank area for sorting 'minutes to' times.

Blank area for sorting 'minutes past' times.

Drawing Hands



Remember, the small hand on a clock tells us what hour it is. We call this the **hour hand**.

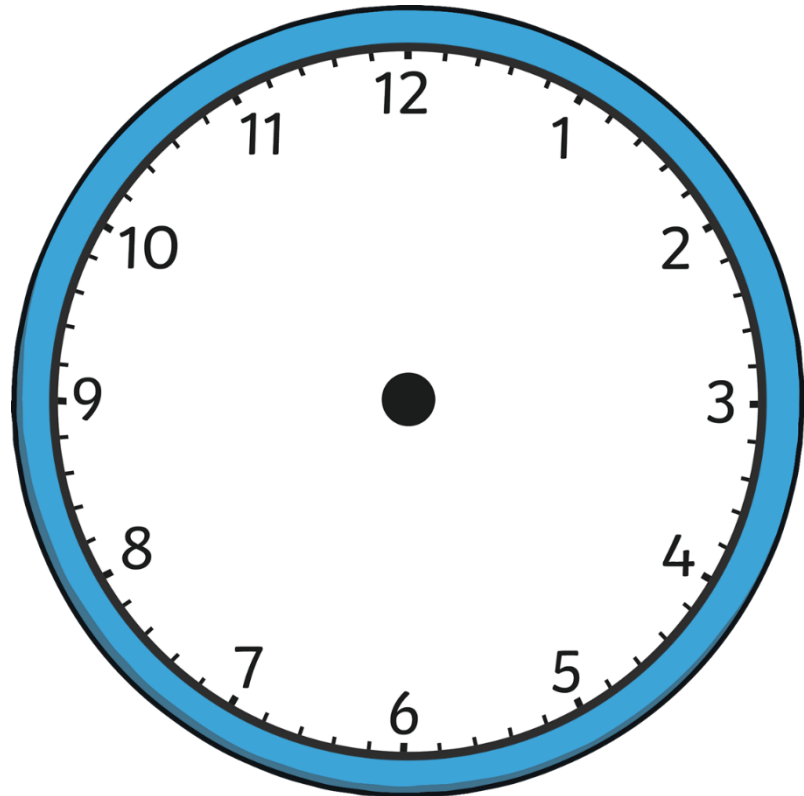
The big hand on a clock tells us what minute it is. We call this the **minute hand**.



hour hand



minute hand

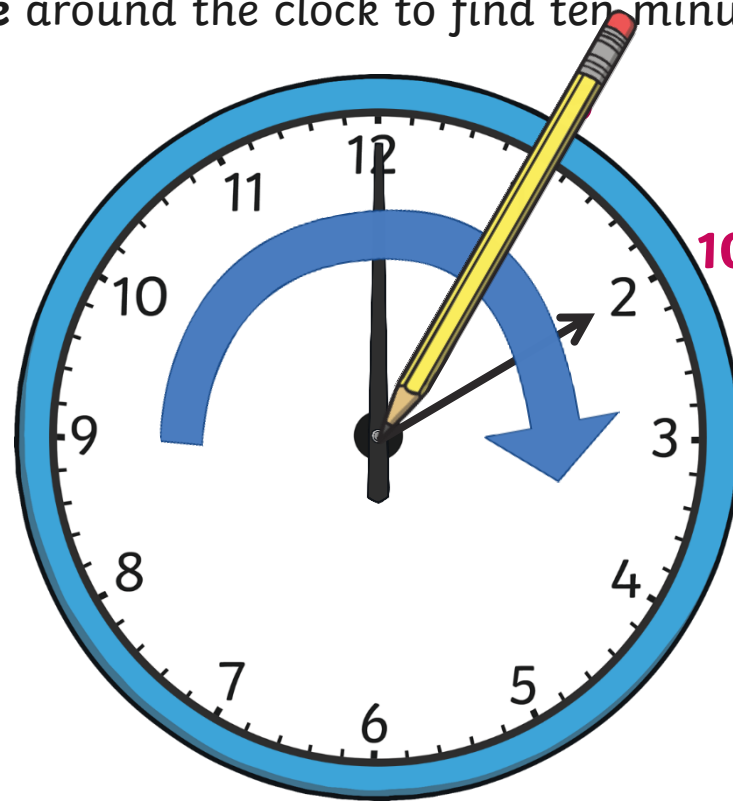


Drawing Hands



If I want to show **ten past 4**, I can start by drawing the minute hand.

Can you help count **clockwise** around the clock to find ten minutes past?



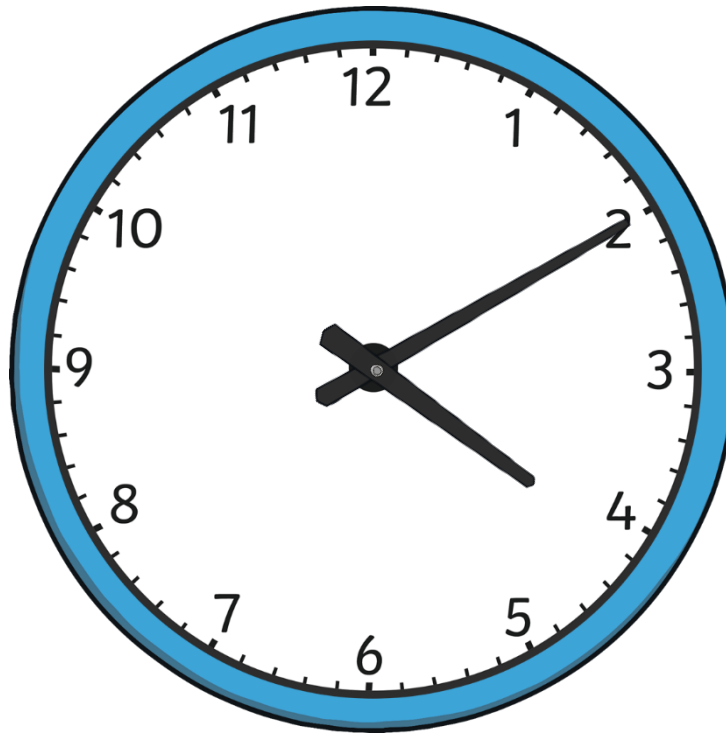
ten past

Drawing Hands



Once I have drawn the minute hand, I can draw the hour hand.
Remember, this is the **short hand**.

I know it is ten past 4 so the hour hand will be pointing **past** the 4.



Diving into Mastery

Dive in by completing your own activity!



Oodles of Time



Draw the minute and hour hand on the clock to show these times. Use a ruler.



five past 9



five to 4



ten past 1



twenty-five to 3



twenty past 6



ten to 12



minutes.



time

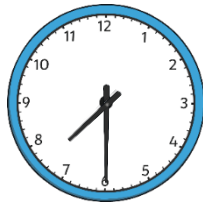
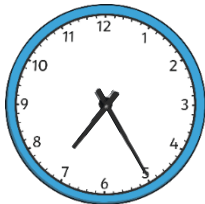
Cluttered Clocks



The following clocks show the time every 5 minutes between 7 o'clock and half past 7 but they have been jumbled up.



Can you help to put the times back in order? Click for the answer.

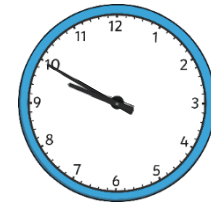
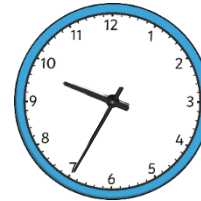
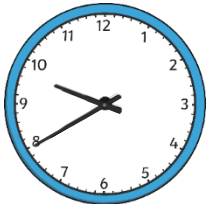
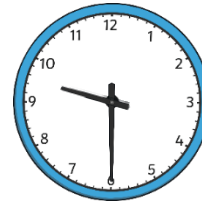


Cluttered Clocks



?

Can you put the rest of these times in order? Click for the answer.



?

?

?

?

?

?

?

Aim



- To draw hands on a clock to show the time to 5 minutes.

Success Criteria

- I can count in 5 minute intervals around a clock face.
- I can count clockwise or anticlockwise on a clock to find 'to' and 'past' times.
- I can draw a long hand to represent the minutes a short hand to represent the hour.

