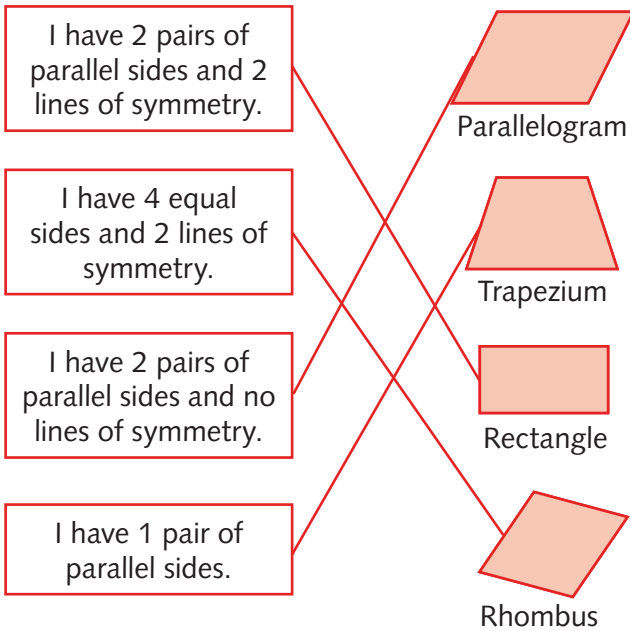


Answers

Challenge 3

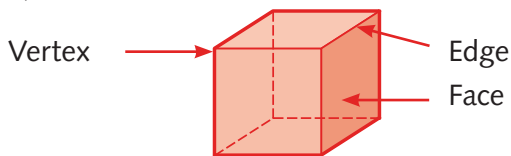
1.



Pages 94–95

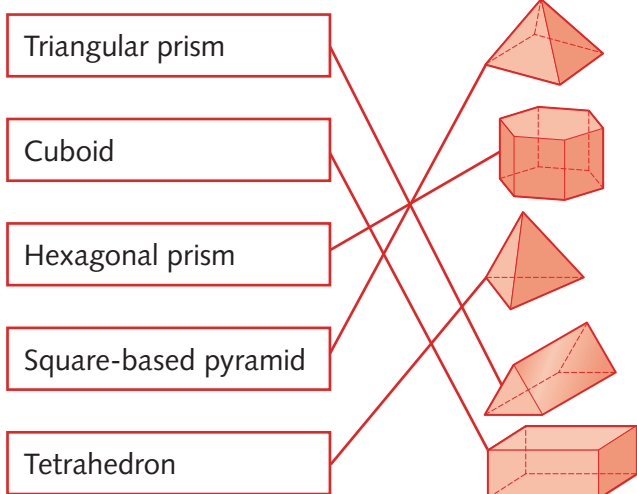
Challenge 1

1. a)



b) A cube has **6 faces**, **12 edges** and **8 vertices**.

2.



Challenge 2

1.

Hexagonal prism	Square-based pyramid	Cuboid	Tetrahedron

2. a) Cube
b) Tetrahedron
c) Triangular prism
d) Square-based pyramid

Challenge 3

1. Shapes A and D ticked

Pages 96–97

Challenge 1

1. a) and b) 1 mark for the lines on each shape coloured appropriately.

Challenge 2

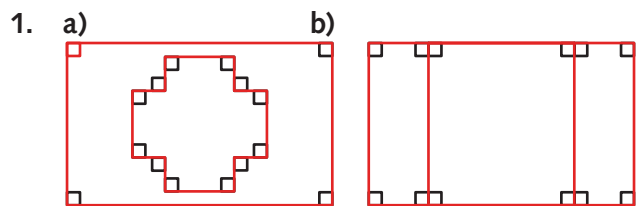
1. 1 mark for each correctly coloured shape.
2. 1 mark for each correctly coloured shape.

Challenge 3

1. a) HG, CD or FE b) AB or HG
c) AB or FE d) GF or DE
2. 1 mark for all parallel lines and 1 mark for all perpendicular lines indicated correctly.

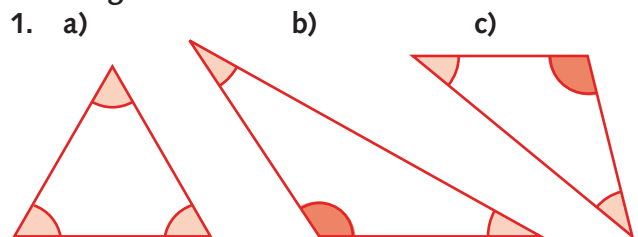
Pages 98–99

Challenge 1



Up to 3 marks for each shape.

Challenge 2



- Less than a right angle
 Greater than a right angle

Challenge 3

1. a) For example:
- b) For example: