



In the autumn of 2020, the New Wolsey Theatre, its staff, resources, auditorium, rehearsal room and participation space will all be available for schools to take part in a new and exciting active learning project.

Working with professionals from the theatre, young people will reconnect with learning and the National Curriculum; discover career pathways in the creative industries; develop essential life skills and use their creativity to reflect upon their experience of lockdown, all in a safe, fun, supportive environment that is Covid-19 secure.

The offer

Duration: A half-day workshop, once a week for six weeks. (We can potentially offer one-off workshops that cover selective elements of this project. We understand that this is a period of uncertainty, so please contact us for a conversation about your school's needs).

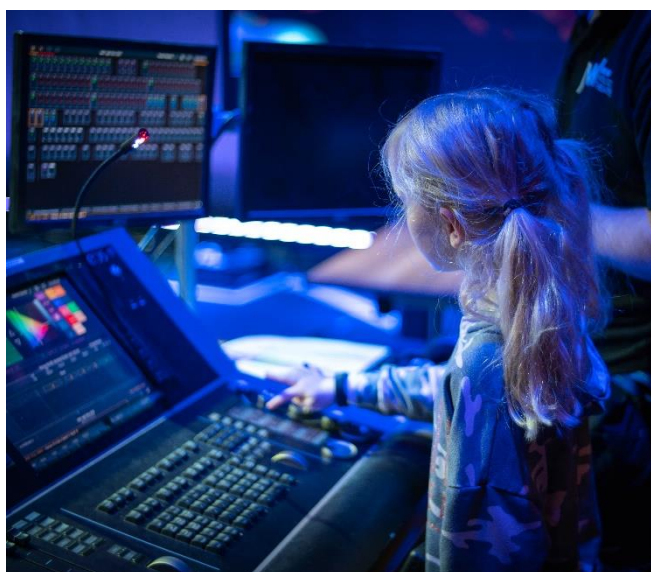
Key Stage: The content of this project is adaptable for different Key Stages and for SEND students.

'..Rebuild friendships and social engagement...' – Guidance for full opening: schools – Department for Education – 2 July 2020

New Wolsey production staff and practitioners will support young people to re-engage with elements of the National Curriculum through a practical set of creative, digital arts and technical theatre workshops.

As well as working alongside professional artists and technicians, young people will get the change to find out about career pathways in the creative industries from our wider staff team.

Across the autumn, we will be working with digital specialists Limbotech. For more information on their work, please see their [website](#)



'Identify pupils who are...at risk of disengagement and develop plans for re-engaging them.'
– Guidance for full opening: schools – Department for Education – 2 July 2020

Over the six weeks, students will also develop a creative response to their experiences this year, which will be displayed in Ipswich town centre, allowing friends and family to view their work in an appropriate, socially distanced environment. Their words and the creative firepower of the New Wolsey Theatre will animate one of our civic spaces and place the voices of young people at the centre of our community's journey out of lockdown.



After months isolated from their peer group and disconnected from education, young people will need support to process their experience and to get their feet firmly back onto the road towards educational success and personal wellbeing.

'Address and equip pupils to respond to issues linked to Covid-19..'
– Guidance for full opening: schools – Department for Education – 2 July 2020

A high quality experience of the arts supports young people to develop the essential skills of co-operation and problem solving, while at the same time promoting language acquisition, empathy, personal resilience and self-confidence.

Specific curriculum based content

Over six weeks we will explore Science through Technical Theatre; Computing through Digital Arts and Mental Wellbeing and Vocabulary through Spoken-Word.

For example, Technical theatre workshops could explore elements of KS2 science topics including:

Sound

Magnetism

Electricity (circuits and conductors)

The properties of materials



'Work closely with other professional's to support the return to school..'
– Guidance for full opening: schools – Department for Education – 2 July 2020

Active Learning: An evidenced approach to learning

The New Wolsey has been collaborating with the Education Sector for 20 years. As one of the arts organisations that has worked with the Paul Hamlyn Foundation on their Teacher Development programme, we have been a part of a wide-ranging project that has successfully evidenced that young people's learning can be dramatically enhanced by a practical, art-based approach to animating elements of the National Curriculum.

An 'active learning' approach has been shown to be especially effective at eroding disadvantage and supporting young people who might not have thrived in a conventional school environment to reach their potential.

Regardless of where your school is in its delivery plan for Science, Computing OR Mental Wellbeing our programme could recap, introduce or support the teaching of these elements of the National Curriculum.

'Support pupil and student mental wellbeing' -- Guidance for full opening: schools – Department for Education – 2 July 2020



Work with professionals on S.T.E.M subjects and learn about careers in the Creative Industries

Unprecedented access to world-class technicians, artists and facilitators and a unique opportunity to learn about creative career pathways from the whole New Wolsey staff team.

Covid-19 secure

We have always taken participant and staff safety extremely seriously in everything that we do. All of our activity will be planned and delivered in line with the most recent government guidance on risk mitigation; we already have Covid-19 specific Health and Safety policies and protocols in place and will collaborate with other organisations to meet their policy needs.

Extra capacity

By delivering this project, the New Wolsey Theatre can provide additional space to help schools to manage pupil numbers on their own sites, as we all adjust to working in new ways.

Fee


The New Wolsey Theatre currently has no income from ticket sales and so we would like to charge for this project. However, we understand the additional strain on budgets because of Covid-19. Please contact us regardless of your organisations financial situation if you are interested in being involved.

We would also like to hear from you if you are aware of funding streams that might support this work, or the travel costs of schools who wish to take part.

Contact us

We understand that this is an uncertain time for everyone, but if you are interested in working with us in any way this autumn to support young people's learning and mental health, please contact us for a conversation.

Thank you

A handwritten signature in blue ink, appearing to read 'T. Casement', with a long horizontal stroke extending to the right.

Tony Casement

Head of Creative Learning

tcasement@wolseytheatre.co.uk