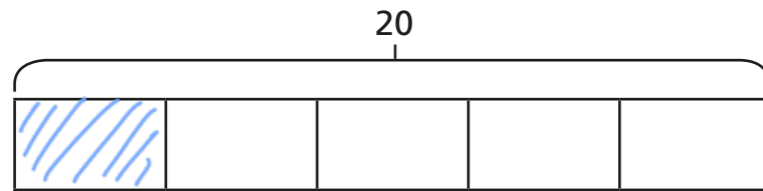


Fractions of an amount

1



a) Shade $\frac{1}{5}$ of the bar model.

b) What is $\frac{1}{5}$ of 20?

2

Use your times tables knowledge to solve the calculations.

a) $\frac{1}{3}$ of 12 =

d) $\frac{1}{10}$ of 80 cm =

b) $\frac{1}{4}$ of £20 =

e) $\frac{1}{12}$ of 60 =

c) $\frac{1}{5}$ of 35 m =

f) $\frac{1}{7}$ of 84 kg =

Now use your answers to solve these calculations.

a) $\frac{2}{3}$ of 12 =

d) $\frac{7}{10}$ of 80 cm =

b) $\frac{3}{4}$ of £20 =

e) $\frac{11}{12}$ of 60 =

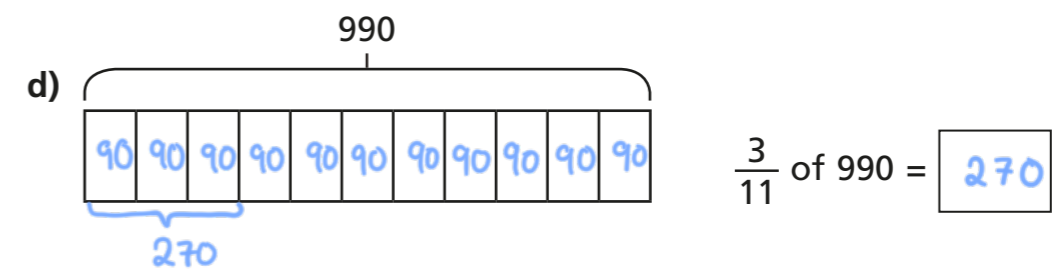
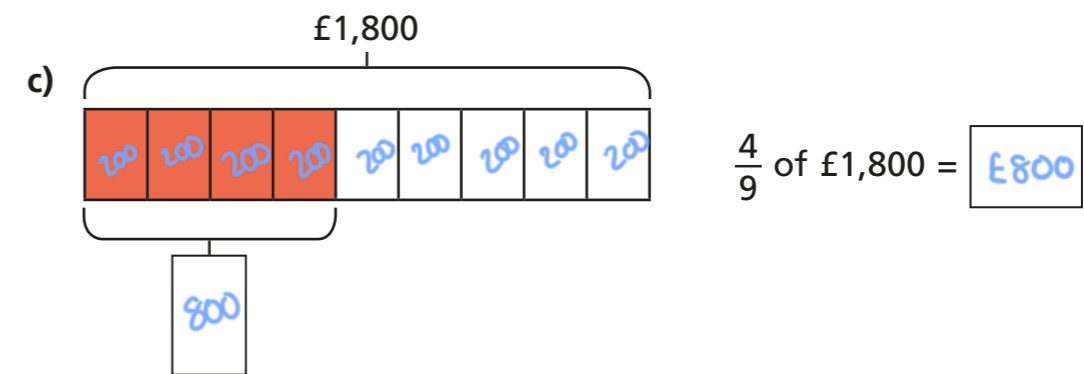
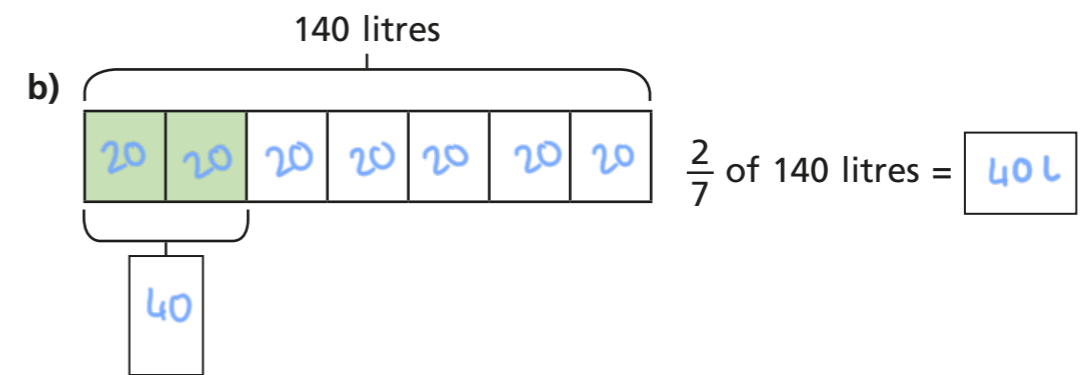
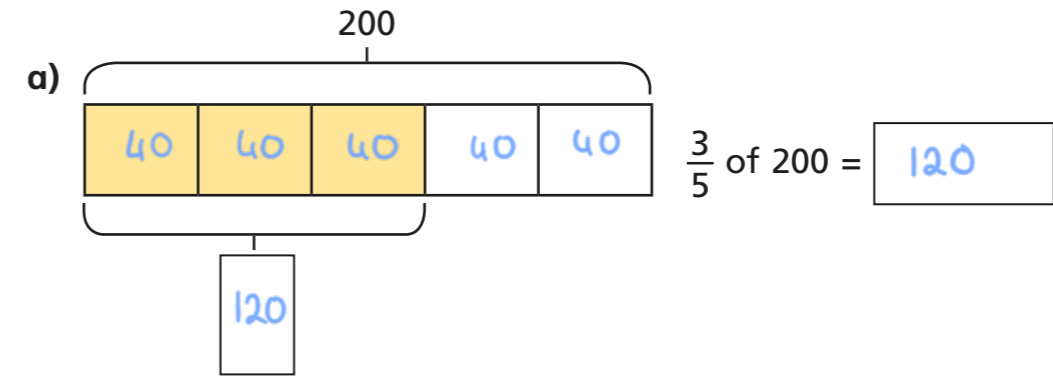
c) $\frac{3}{5}$ of 35 m =

f) $\frac{6}{7}$ of 84 kg =



3

Calculate the missing values.



- 4 a) In a school of 480 pupils, $\frac{2}{3}$ are juniors.
How many juniors are in the school?

320

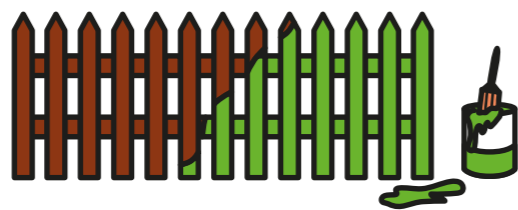
- b) A factory makes 256 cars.
 $\frac{3}{8}$ are electric cars.
How many electric cars does the factory make?

96

- c) Brett uses $\frac{2}{5}$ of his £180 savings to buy a train ticket.
How much of his savings does he have left?

£108

5



Alex has 288 m of fence to paint.
She paints $\frac{3}{12}$ of the whole fence on Monday. She then paints $\frac{1}{2}$ of what is left on Tuesday.

How much fence does she have left to paint?

108m



- 6 Fill in the missing numbers.

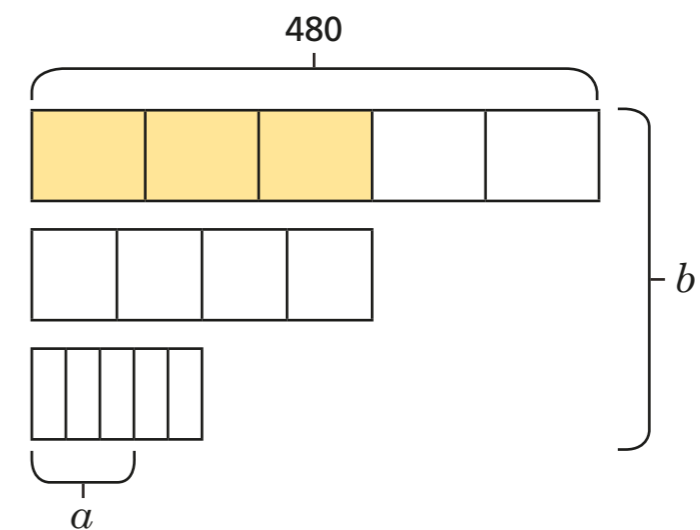
a) $\frac{3}{10}$ of \$500 = \$150

c) $42 = \frac{6}{100}$ of 700

b) $\frac{3}{4}$ of 100 kg = 75 kg

d) $450 = \frac{3}{20}$ of 3,000

- 7 Find the values of a and b .



$a = 86.4$

$b = 912$

