

4×5

1) Use an addition to check the answer.

$$392 - 170 = 222 \quad 222 + 170 = 392$$

2) Find the difference between 392 and 184 **208**

3) Calculate $523 + 94$ **617**

4) Write the time in words.



**Twenty-five minutes
past twelve**

2×9

1) Complete the sentence.



There are 3 groups of 4

2) Calculate $593 - 240$ **353**

3) Find the total of 782 and 117 **899**

4) Write 615 in words. **Six hundred and fifteen**

10 × 8

1) There are five pots of three pencils.

How many pencils are there altogether?

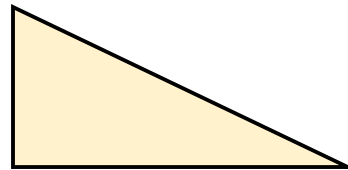


15 pencils

2) What is 150 less than 400? 250

3) Find the sum of 523 and 182 705

4) What shape is this?



Triangle

$$5 \times 7$$

- 1) 12 cookies are shared into 3 equal groups.
How many cookies are in each group?

4 cookies

- 2) Subtract 284 from 916 632

- 3) What is 55 more than 870? 925

- 4) How many days are in 2 weeks? 14 days

12×2

- 1) Calculate 3×6 18

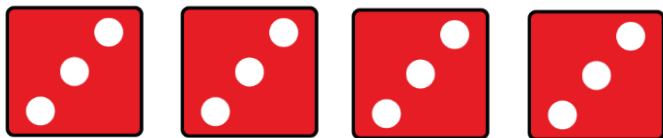
- 2) Estimate $305 + 448$ $300 + 450 = 750$

- 3) Add 254 and 37 together. 291

- 4) How many sides does a pentagon have? 5

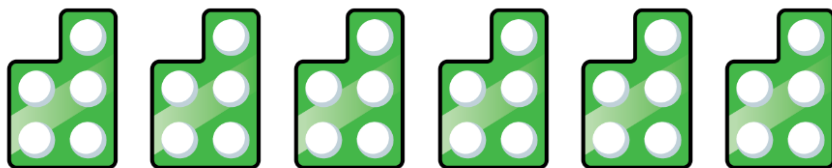
10×9

1) How many dots are there altogether?



12 dots

2) Complete the sentence.



There are 6 groups of 5

3) Find the difference between 400 and 137 **263**

4) How many faces does a cube have? **6**

4×5

1) One square has 4 sides.

How many sides are there on 6 squares? **24 sides**

2) Calculate 5×3 **15**

3) Decrease 482 by 190 **292**

4) Represent 32 in tally marks. **|||| |** **|||| |** **|||| |** **|||| |** **|||| |** **|||| |** **||**

11 × 2

- 1) Calculate 9×4 **36**
- 2) One triangle has 3 sides.
How many sides do 9 triangles have altogether? **27 sides**
- 3) If $732 - 184 = 548$, what is $732 - 548$? **184**
- 4) What is $\frac{1}{4}$ of 40? **10**

$$9 \times 5$$

1) 32 pens are grouped in fours.

How many groups are there? **8 groups**

2) Divide 36 by 3 **12**

3) If $520 - 375 = 145$, what is $145 + 375$? **520**

4) How many quarter turns are in a full turn? **4**

Flashback 4

Year 3 | Week 10 | Day 5

2 × 1

1) Divide 44 by 4 **11**

2) Find the missing number.

$$33 \div \underline{\quad} = 3$$

3) Calculate $391 - 200$ **191**

4) What shape is this?



hexagon

4×2

1) Complete the missing number.

$$4 \times 3 = \underline{3} \times 4$$

2) One car has four wheels.

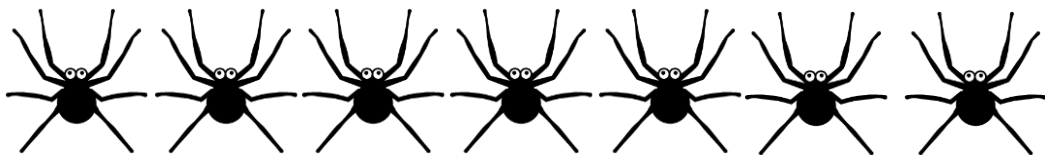
How many wheels do 6 cars have? **24 wheels**

3) Subtract 45 from 306 **261**

4) What day comes after Wednesday? **Thursday**

5×8

1) How many legs do 7 spiders have?



56 legs

2) Find the product of 4 and 5 **20**

3) Ron jumps 423 cm

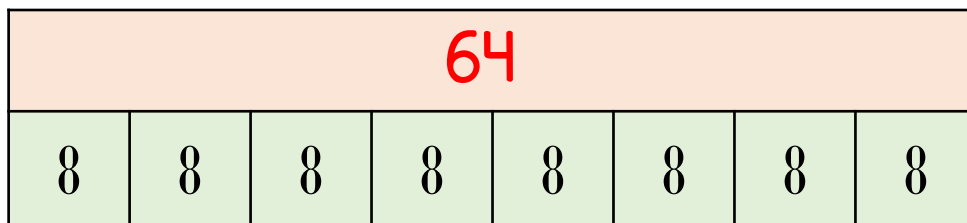
Rosie jumps 65 cm further.

How far does Rosie jump? **488 cm**

4) How many hours are in a day? **24 hours**

6×10

1) Complete the bar model.



2) Calculate 8×4 32

3) A book has 283 pages.

Teddy has read 199 pages.

How many pages are left to read? 84 pages

4) How many vertices does an octagon have? 8

3×2

1) 40 crayons are divided equally into 8 pots.

How many crayons are in each pot? **5 crayons**

2) How many groups of 4 are in 16? **4**

3) Find the missing number.

$$456 + \underline{134} = 590$$

4) How many minutes are between 12 o'clock and quarter past 12? **15 minutes**

6×3

1) Divide 72 by 8 **9**

2) There are 4 equal piles of books.

There are 32 books altogether.

How many books are in each pile? **8 books**

3) Complete the missing number.

$$782 - \underline{590} = 192$$

4) How many minutes are in 3 hours? **180**