

Multiply 3-digits by 1-digit

1 Filip uses a place value chart to help him multiply a 3-digit number by a 1-digit number.

Hundreds	Tens	Ones
100	10 10	1 1 1 1
100	10 10	1 1 1 1
100	10 10	1 1 1 1

a) What multiplication is Filip working out?

$$\boxed{124} \times \boxed{3}$$

b) What is the answer to Filip's multiplication?

$$\boxed{372}$$

2 Use place value counters to complete the multiplications.

a) $3 \times 213 = \boxed{639}$

d) $6 \times 106 = \boxed{636}$

b) $4 \times 216 = \boxed{864}$

e) $4 \times 209 = \boxed{836}$

c) $5 \times 106 = \boxed{530}$

f) $317 \times 3 = \boxed{951}$

3 Complete the multiplication.

Use the place value chart to help you.

H	T	O
100 100	10	1 1 1 1 1
100 100	10	1 1 1 1 1
100 100	10	1 1 1 1 1

	H	T	O
	2	1	5
x			3
	6	4	5
		1	

4 Complete the multiplications.

a)

	H	T	O
	2	1	7
x			4
	8	6	8
		2	

c)

	H	T	O
	1	0	8
x			6
	6	4	8
		4	

b)

	H	T	O
	4	3	9
x			2
	8	7	8
		1	

d) 163×5

	H	T	O
	1	6	3
x			5
	8	1	5
	3	1	

e) 3×240

		H	T	O	
		2	4	0	
	x			3	
		7	2	0	
		1			

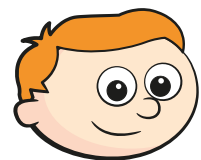
f) 7×131

		H	T	O	
		1	3	1	
	x			7	
		9	1	7	
		2			

- 5 A lorry driver travels 156 km per day.
How many kilometres will the lorry driver have travelled after 3 days?

468km

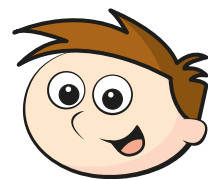
- 6 Ron and Teddy are working out 5×245



Ron

I know the answer will be greater than 1,000 because I know 5×200 is 1,000

I know the answer should end in 5 because I know 5×5 is 25



Teddy

- a) Who is correct? Circle your answer.

Ron

Teddy

both

neither

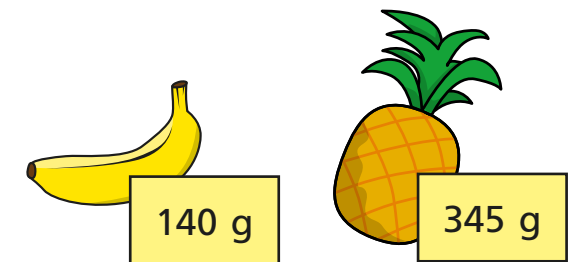
- b) Use a written method to work out 5×245

1,225

- 7 There are 7 year groups in a school.
There are 112 children in each year group.
How many children are there in the whole school?

784

- 8 A banana weighs 140 g
A pineapple weighs 345 g



- Bag A contains 8 bananas and bag B contains 3 pineapples.
Which bag weighs more and by how much?
Show your working.

Bag A weighs 85 g more than bag B.