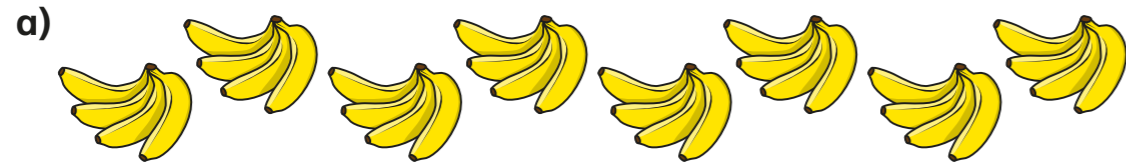
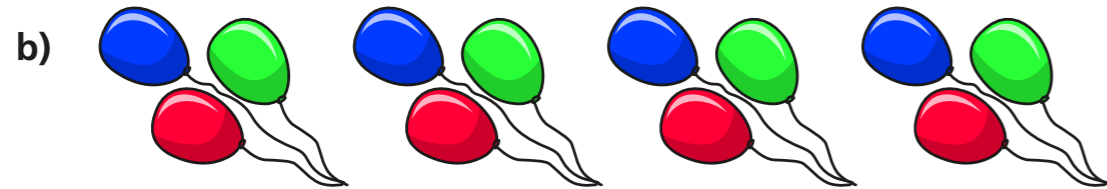


The 4 times-table

1 Complete the multiplication.



$$\boxed{8} \times \boxed{4} = \boxed{32}$$



$$\boxed{4} \times \boxed{3} = \boxed{12}$$

2 Complete the number sentences.

a) $6 \times 4 = \boxed{24}$

g) $24 \div 4 = \boxed{6}$

b) $4 \times 3 = \boxed{12}$

h) $8 \div 4 = \boxed{2}$

c) $\boxed{28} = 7 \times 4$

i) $0 \div 4 = \boxed{0}$

d) $4 \times \boxed{12} = 48$

j) $\boxed{44} \div 11 = 4$

e) $0 \times 4 = \boxed{0}$

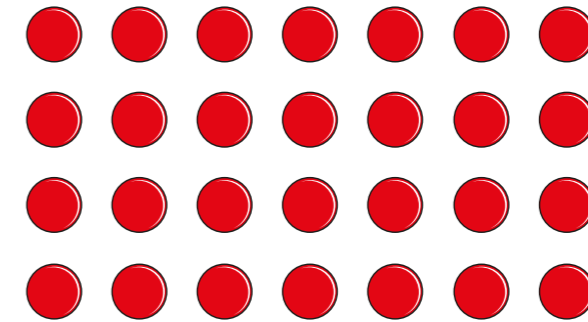
k) $\boxed{20} \div 4 = 5$

f) $4 \times 9 = \boxed{36}$

l) $1 \times 4 = \boxed{4}$

3 What multiplication and division statements does the array represent?

Complete the statements.



$$\boxed{4} \times \boxed{7} = \boxed{28}$$

$$\boxed{7} \times \boxed{4} = \boxed{28}$$

$$\boxed{28} \div \boxed{7} = \boxed{4}$$

$$\boxed{28} \div \boxed{4} = \boxed{7}$$

4 Complete the number sentences.

a) $2 \times 4 = \boxed{8}$

c) $3 \times 4 = \boxed{12}$

$4 \times 4 = \boxed{16}$

$3 \times 8 = \boxed{24}$

$8 \times 4 = \boxed{32}$

$3 \times 12 = \boxed{36}$

b) $8 = 4 \times \boxed{2}$

$16 = 4 \times \boxed{4}$

$32 = 4 \times \boxed{8}$

What patterns do you notice?



5 Write $<$, $>$ or $=$ to compare the statements.

a) $48 \div 12$ $(=)$ 4

d) $4 \div 4$ $(<)$ 4×4

b) 36 $(>)$ $40 \div 4$

e) 1×4 $(=)$ 4×1

c) $16 \div 4$ $(<)$ 4×4

f) 4×2 $(=)$ $32 \div 4$

6 A paper clip is 4 cm long.



How long are 6 of these paper clips?

24cm

7 Dexter buys 10 mugs and 4 key rings.
How much money does he spend in total?



£52

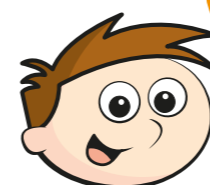
8 The pictogram shows the animals a group of children have as pets.

Complete the pictogram.

Animal	Pictogram	Number of animals
cat		16
dog		28
bird		20
mouse		4

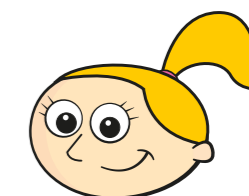
= 4 animals

9



Teddy

Some of the numbers in the 4 times-table are even, but not all of them.



Eva

All numbers in the 4 times-table are even.

Who is correct? Eva

How do you know? Talk about it with a partner.