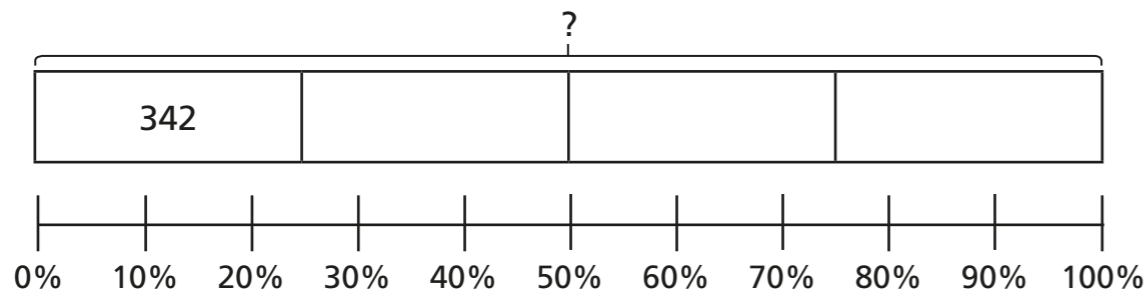


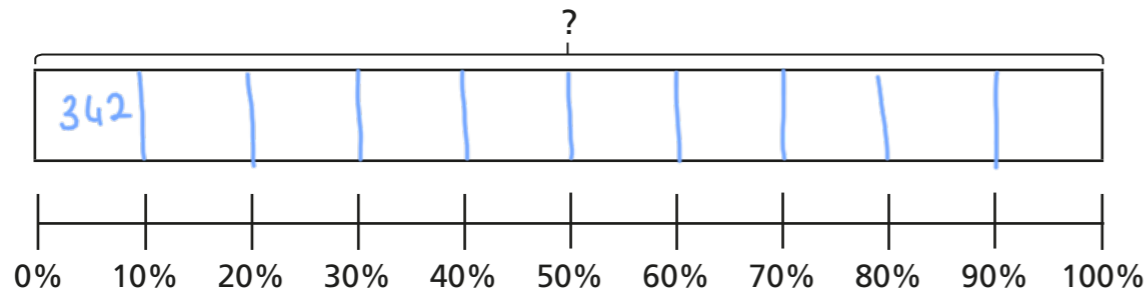
Percentages – missing values

1 Complete the bar models to find the missing numbers.

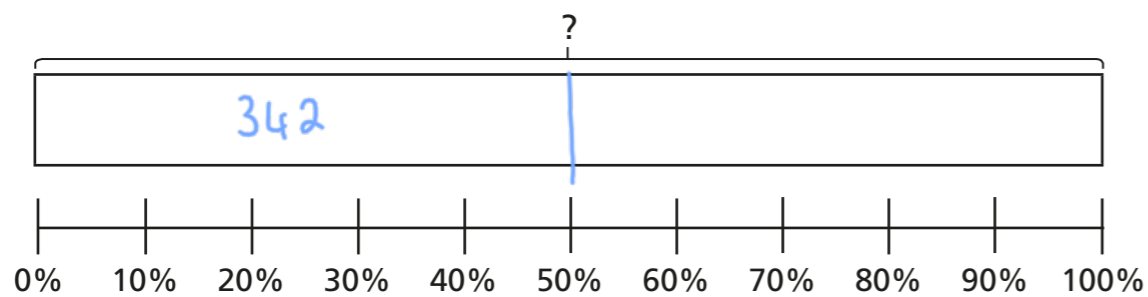
a) 25% of $\boxed{1,368}$ = 342



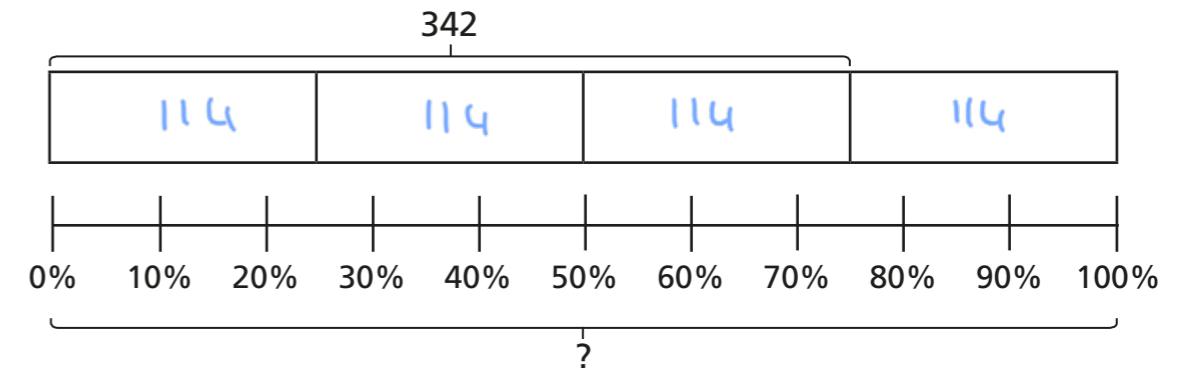
b) 10% of $\boxed{3,420}$ = 342



c) 50% of $\boxed{684}$ = 342



d) 75% of $\boxed{456}$ = 342



2 40% of the children in a school are boys.

There are 188 boys in total.

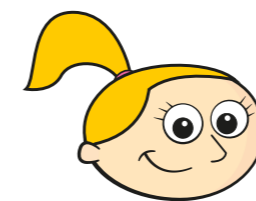
a) How many children are there altogether?

$\boxed{470}$

b) How many girls are there?

$\boxed{282}$

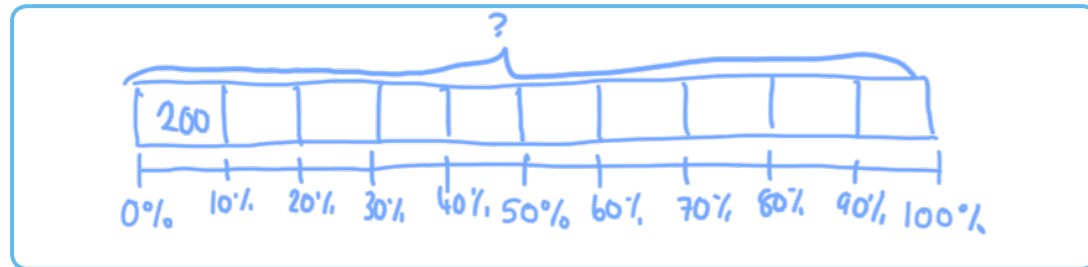
3 10% of $\boxed{}$ = 200



I know that to find 10% I have to divide by 10, so the answer is 20

a) What mistake has Eva made?

b) Draw a bar model to help Eva find the correct answer.



c) What is the correct answer?

2,000



4 Complete the calculations.

a) 20% of 150 = 30

c) 25% of 400 = 100

20% of 300 = 60

75% of 300 = 225

b) 10% of 400 = 40

d) 80% of 40 = 32

10% of 200 = 20

25% of 32 = 8

5 The table shows the number of people who visited a cinema over four days.

a) Fill in the missing information.

Day	Percentage of total visitors	Number of visitors
Thursday	10%	224
Friday	20%	448
Saturday	45%	1,008
Sunday	25%	560
Total	100%	2,240

b) How many more people went to the cinema on Saturday than Sunday?

448

c) 60% of the visitors were children.
How many children went to the cinema?

1,344

6 Find three different solutions to make the statement correct.

10% of = % of 50

E.g.

500	100
100	20
10	2

What do you notice about your answers?

Talk about it with a partner.

