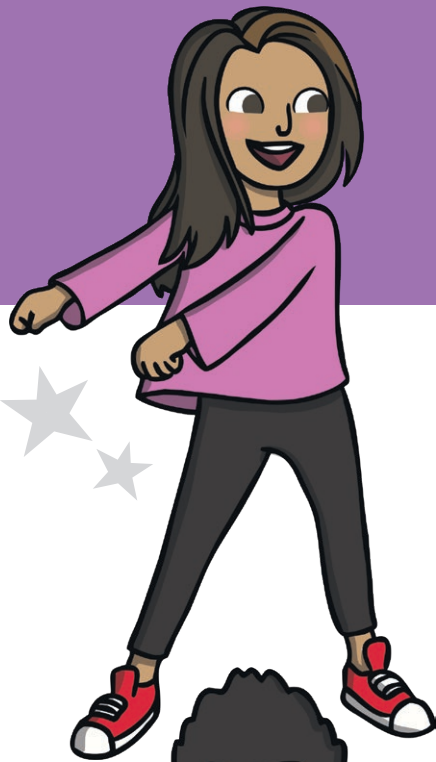


The Floss Rule

When **f** **l** **s** or **z** comes after a short vowel sound at the end of a one-syllable word, it is...



short vowel sound + **f** = **ff**

short vowel sound + **l** = **ll**

short vowel sound + **s** = **ss**

short vowel sound + **z** = **zz**



ff puff • fluff • cliff • sniff

ss miss • boss • hiss • less

ll hill • doll • sell • drill

zz buzz • jazz • fizz • fuzz